

A·R·I·S
GROUP

COMPANY PROFILE

TÜV
AUSTRIA
HELLAS

CONTENTS

INTRODUCTION

Vision
Excellence
Capabilities
History

WORKS

XL

Urban design

L

Offices / Commercial
Hotels
Sports
Airports
Hospitals
Industries and Logistic Centers

M

Residential
Stores
Restoration

STRUCTURE

Work
People

COLLABORATIONS

CLIENTS

LIST OF WORKS

CEO MESSAGE

MICHAEL MITROPOULOS



In the early 80's, I began to draft the first design proposals and detailed drawings. Even then we were fighting a never ending battle to present work at the highest level possible. We had the courage for this but the future perspectives were not looking promising.

But as the years were passing by and the economy grew, few visionary leaders took over and tried to develop projects through the European Union. The E.U. exceeded our horizons. New opportunities for growth and development presented themselves, changing the perspective of things.

In the early 2000's, the first opportunities for international projects presented themselves. Totally new areas of work, which called for new methods of design planning and project execution, appeared.

Looking back in time, I find that my work has always been a great source of happiness for me, and with the support of my team we managed to keep our clients satisfied and earn their respect.

Our motivation is the endless effort to grow and to succeed in our field. Our strength comes from our client's confidence in us and we have faith in the outstanding work of our experienced team who has completed every task they were assigned to successfully, always giving their heart to each and every project.

We intend to keep working with respect to our client's demands and the characteristics of each project, while using state of the art applications, so as to deliver exceptional design studies and project management services.

Our philosophy in a few words is "How can we make it happen". We believe in that motto and we try hard to surpass ourselves every time.

INTRODUCTION	WORKS	XL	L	M	STRUCTURE	COLLABORATIONS	CLIENTS	LIST OF WORKS

INTRODUCTION



VISION

Deliver to clients planning solutions and project management services, which create exceptional value and are capable to influence our market

MISSION

Our mission is to achieve excellence in all of our services, related to design studies, engineering, project management and the construction related activities in general, through the implementation of evolutionary, automated and interrelated procedures, in all the levels of the company, whilst respecting our clients and the environment

To maintain our recognizable design identity and promote our reputation, as an integrated engineering firm, with a wide collaboration network in Greece and abroad. Our clients, both from public and private sector, will seek us in order to achieve and transcend their aspirations.

To add value through our top quality services and our innovative and strategic thinking, while maintaining our ethical practice and reasonable profits.

EXCELLENCE

Implementation of innovative design strategies
State-of-the-art modeling, project management and engineering capabilities.

Quality control and assurance program.

Experienced, knowledgeable owners/engineers, with a thorough understanding of design & PM codes and the target market.

Our business is client service. It is repeat business. One doesn't sell an engineering project, one develops a proposal that works for the client. We must always be aware of the big-company consulting phenomenon of the split between selling the job and fulfilling the job, which leads to client dissatisfaction. The job should be developed, scoped, sold, and fulfilled by the same people. Our clients should never buy a job from one partner and have it delivered by anybody other than that same partner.

We need to avoid the temptation to significantly drop fees to gain jobs. When a potential client questions the cost of a project, we explain the benefits. If the budget is for less money, then we must offer less service.

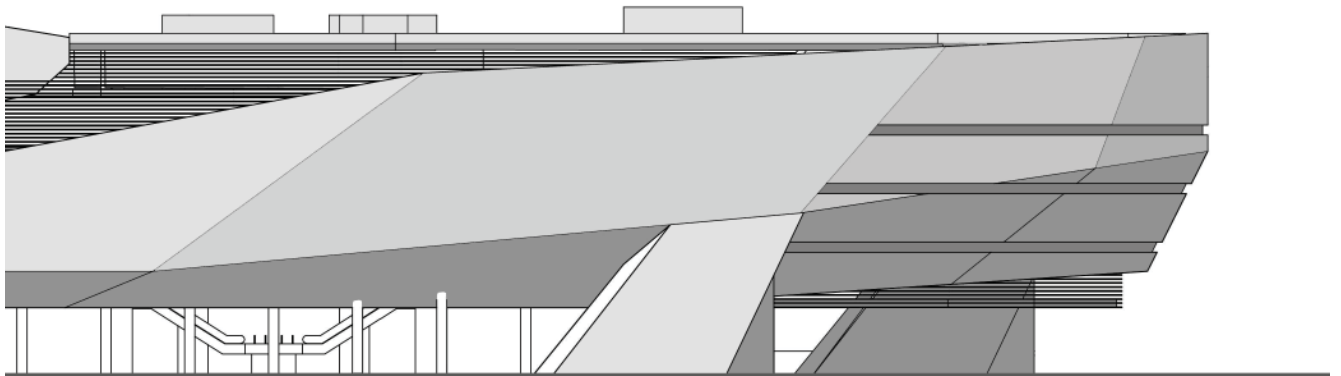
VALUES

Architectural & Design Excellence

Respect to the client

Inspiration / Innovation

Strategic Thinking



HISTORY

A.R.I.S. was founded over thirty years ago, but was significantly restructured approximately 4 years ago. The know-how of the senior partners passed to the new engineers and junior partners. A.R.I.S. offices are located in the northern suburbs of Athens, Greece.

A.R.I.S. personnel consists of highly educated and motivated engineers, which have learned to incorporate, in their way of working, the combined know-how of the company's long year experience, with the innovative thinking and the state of the art practices.

The firm has been active in various European countries as well as the Balkan area and the GCC countries, providing design, PM and consultancy services to multinational companies and local authorities and investors. The market segments serviced by the firm include, in both public and private sector, airports, stadiums and sport facilities, residential developments, industrial, commercial, educational facilities, hotels & resorts etc.

As a result of talent, dedication and hard work, A.R.I.S. is able to provide expertise and leadership throughout an interactive services process. By maintaining communication and integrated services concepts, A.R.I.S. creates solutions unique to its clients' needs.

Our services include consulting engineering, project management and design services, from conceptual design through building start-up, on a wide variety of facilities,

including new and upgraded commercial, institutional, governmental, sport complexes and hotels and resorts.

A.R.I.S. has the experience and the creative capacity to formulate and communicate its proposals.

We provide services which aim to clearly identify our Client's ambitions and transcend them. As a result, our deliverables are custom made solutions focused on the specifics needs of the project.

A.R.I.S. operates the Balanced Scorecard as a Strategic Management System. We operate this system with several KPI's in five interrelated levels (Financial, Internal Business Processes, Learning and Innovation, Customer and Vendor – Supplier Perspective).

The senior partners of A.R.I.S., who have a continuous experience of over 30 years, are working together with the junior engineers, constantly trying to identify and analyze the social and technological changes, which affect the art and practice of PLANNING & CONSULTING in general.

A.R.I.S. is a community of designers, engineers and project managers, who are loyal to the principles of team work and strive for excellence in the end product. A.R.I.S. has experience of working on a wide range of projects (new built and refurbishment) in both the private and the public sector.



CAPABILITIES

Our company has the necessary skills required for:

Design Studies
Project Management
Technical Consultancy Services
On-Site Supervision
etc.

In a wide range of Sectors such as:

HOTELS & RESORTS
RETAIL
OFFICE BUILDINGS
INDUSTRIAL FACILITIES
LOGISTICS
BUSINESS CENTERS
AIRPORTS
STADIUMS
RESIDENTIAL etc.

A.R.I.S., owns its offices in Athens and is a member of a wide network of cooperating offices in Italy, Germany and the U.K.

A.R.I.S is a proud member of the Greek Council of Design Firms and the European Network of Architectural Design Firms, having the highest possible

rank of degree (Rank E), for architectural and special architectural studies.

A.R.I.S. is able to provide professional services to support all stages of building projects, from a conceptual stage to the implementation stage.

As design and PM team leaders, we are well versed in the tasks of **consultation, project brief analysis, design management and co-ordination** of the full team of design consultants, including specialists.

Keys to Success:

Providing high level services just in time (JIT) and within the agreed budget

Promote our proposals' advantages to our clients (e.g. private international organizations, public authorities and local communities), through arranging conventions and seminars that take place before, during and after each project we undertake
Maintain good relationships with our clients, after project completion, through an integrated "after sales" service framework.



RESPONSIBILITY

We offer our services at discount rates to non-profit organizations.



INTRODUCTION	WORKS	XL	L	M	STRUCTURE	COLLABORATIONS	CLIENTS	LIST OF WORKS

WORKS

XL

Urban design
Master Planning



DEVELOPMENT OF A COMPLEX RETAIL PARK

Title: Complex Retail Park at Metamorfosis, Athens
Client: Panita Ltd
Year: 2021
Size: 85.000 sq.m.

URBAN DESIGN



Description:

ARIS undertook, on behalf of Panita, the execution of the masterplanning, the design studies and the technical consultancy services, for the development of a new retail park in the northern part of Athens. The entire surface of the plot is 85 thousand square meters while the development surface is nearly 71 thousand square meters.

The development includes:

- Retail
- Entertainment area and cinemas
- Sports facilities
- Residential building
- Rehabilitation center
- Cultural areas
- Office buildings



DEVELOPMENT OF A TOURISM VILLAGE ON A PUBLIC ISLAND

Title: Tourism Village development on an unexploited public Island near the coastal front of Attica, Athens

Client: Private Investor

Year: 2016

Size: 1.400.000 sq.m.



Description:

ARIS, on behalf of a private investor, undertook the execution of the design studies and the technical consultancy services, for the development of a new settlement on an public inhabited island, near the Attica coastal front. The entire surface of the island is 1,4 million square meters while the development surface is nearly 250 thousand square meters. We provided a variety of different land uses, so as to develop an autonomous tourism village with its own infrastructure. The development includes:

- Hotels and bungalows
- Port, marina and public service area
- Entertainment village
- Sports
- Residential
- Villas
- Swimming and water sports
- Administrative and supporting facilities
- Commercial and cinemas
- Cultural
- Heliport
- Yacht club



RESIDENTIAL DEVELOPMENT IN SOFIA, BULGARIA

Title: Residential Development in Sofia, Bulgaria
Client: Talima Venture Inc.
Year: 2012
Size: 750.000 sq.m.

URBAN DESIGN



Description:

A.R.I.S. executed the urban design study and the Master Plan, regarding the recreation of one of the most promising areas in the capital of Bulgaria. The wider area is easy accessible and relatively near to Sofia Airport. Besides the residencies allocation, the study included a variety communal uses/edifices e.g. shopping malls, hospitals, commercial etc. The whole idea was to create an autonomous “city” within the city of Sofia.



RECREATION OF DRAPETSONA AREA

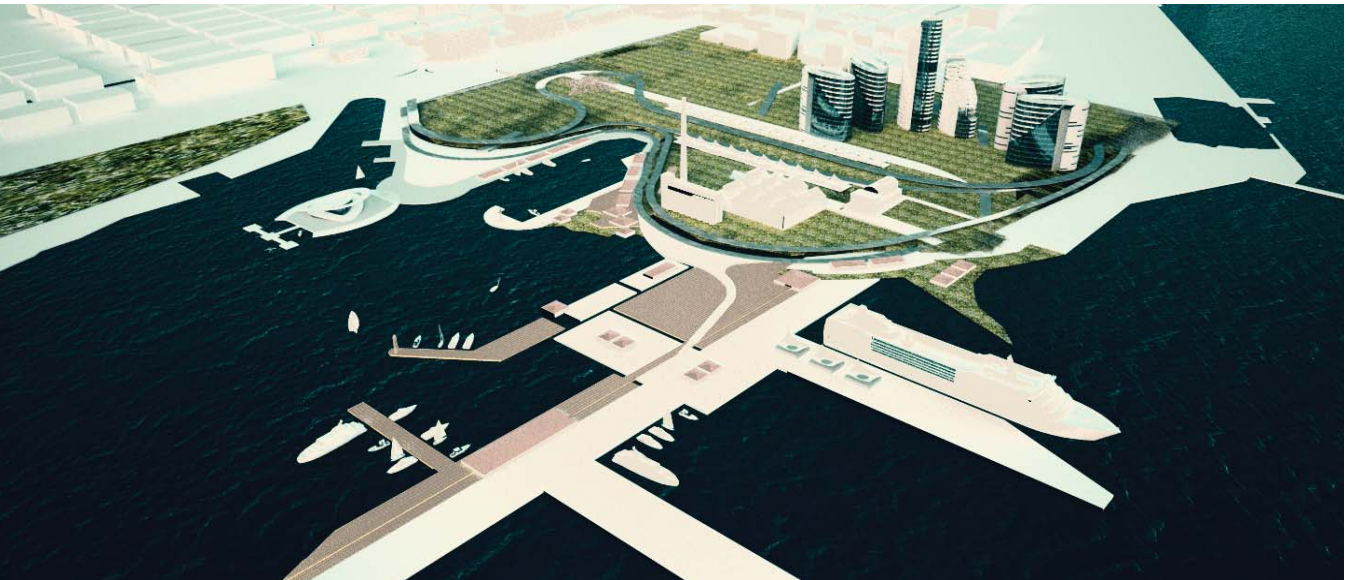
Title: Recreation Of The Area of Drapetsona, Piraeus
Client: Municipality of Drapetsona - Keratsini
Year: 2012
Size: 285.000 sq.m.

URBAN DESIGN



Description:

The plot of Drapetsona, one of the largest unexploited seaside plots, of the Mediterranean Sea, was used for industrial facilities years ago. Due to the fact that these facilities were either shut down or relocated, the local Municipality decided to recreate the area and add value to the local community. A.R.I.S. undertook this project, of national importance, and promoted the idea of developing Skyscrapers. Through this idea we achieved to create a design proposal, which was both attractive as an investment and at the same time included “green” areas at a percentage of approximately 70%. The existing buildings are maintained but with a different use, namely cultural centers, museums etc. Drapetsona is located next to the Piraeus port and these 2 areas are soon to be connected with a monorail. Therefore, our study comprised a wide selection of touristic attractions and leisure facilities, so as to attract the millions of tourists that arrive yearly to the port.



RECREATION OF THE AREA OF HELLINIKON

Title: Recreation Of The Area of Hellinikon,
ex. Athens International Airport

Client: Private Investor

Year: 2007 – present day

Size: 2.200.000 sq.m.

URBAN DESIGN



Description:

Our team of architects and engineers was involved in the recreation of the area of Hellinikon since 2007, where an international competition took place. Since then we have been collecting market data concerning the wider area of Hellinikon. All of the data collected, along with our expertise are integrated in our design study, which comprises a wide range of different uses (commercial, residential, cultural, recreational etc.). Our proposal's distinct characteristics, are the height of the buildings (approx. 70 meters) and the creation of a canal. The first one allows us to occupy a very small percentage of the plot, while assuring the feasibility of the project and the second one provides to the development a "link" to the sea front. The realization of this project is able to positively influence the GDP of Greece and therefore, during the last couple of years, we have started a campaign promoting the pros and cons of our proposal. Through our campaign we attracted the interest of many foreign and domestic developers willing to co-invest in this project. There has never been a more reasoned and detailed study regarding this plot and we are proud that most of our ideas and distinct characteristics were incorporated in the frame of the current international competition.



INTERNATIONAL COMPETITION FOR THE AREA OF HELLINIKON

Title: Recreation Of The Area of Hellinikon,
ex. Athens International Airport

Client: International Competition

Year: 2004

Size: 5.500.000 sq.m.



Description:

Our team of architects and engineers was involved in the recreation of the area of Hellinikon since 2007, where an international competition took place. The structure of the landscape on this particular site is linear. Due to the previous use of the landscape as Athens international airport. The two airplane runways are the main axis, one of them is parallel to the coastline. In our proposal we develop a third axis which unfolds from east to west and intersects the existing. The new axis intelligibly connects the old and the new International airport through Mount Ymittos and continues in the Saronikos gulf. At the point that the three axes intersect we design the centre of the theme park with the "Olympic plaza" creating a dynamic pole with a metropolitan character.

OLYMPIC BEACH VOLLEY SITE REDEVELOPMENT

Title: Olympic Beach Volley Site Redevelopment
(post Olympic use), Athens

Client: Village Roadshow Limited

Year: 2005

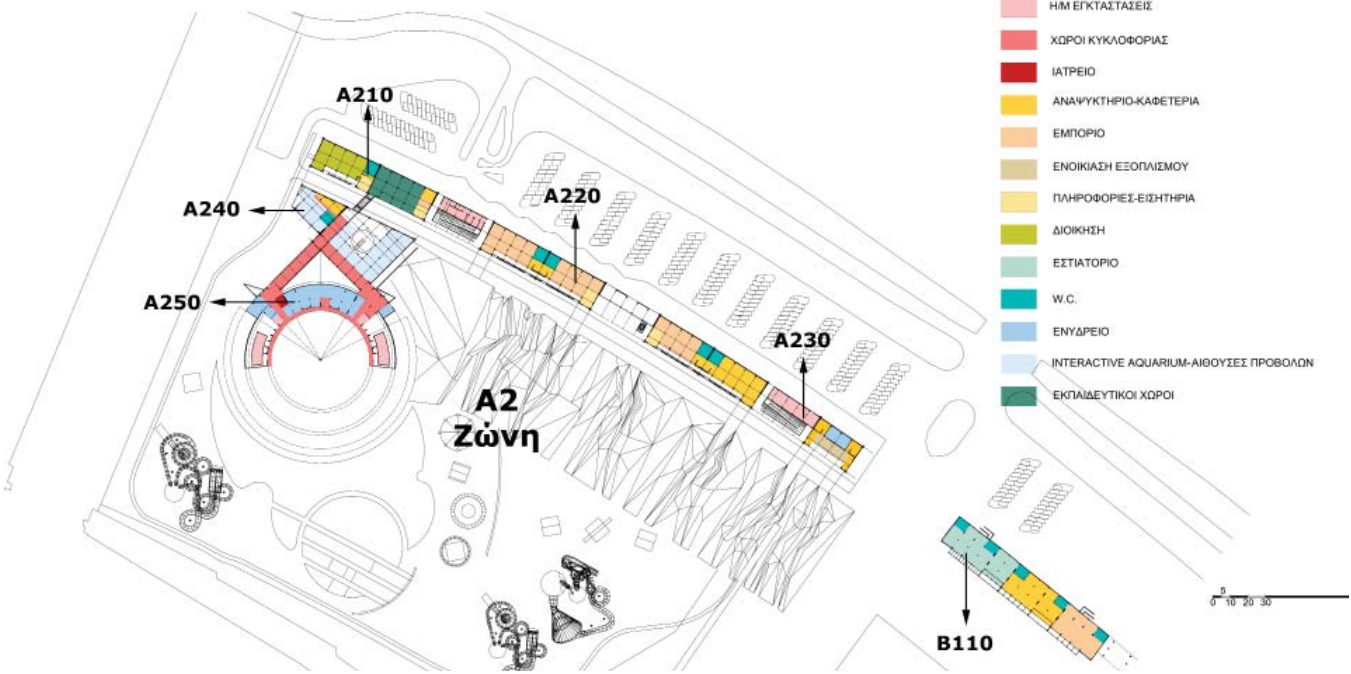
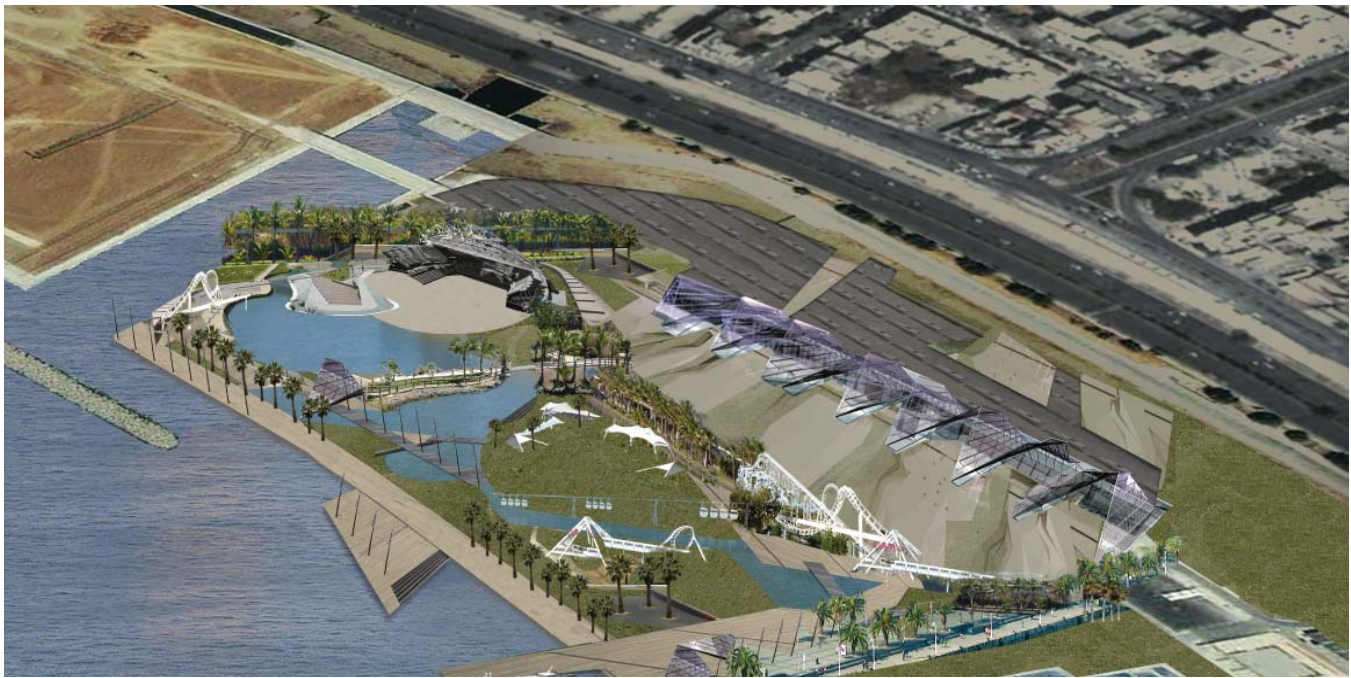
Size: 14.800 sq.m.

URBAN DESIGN



Description:

After the completion of the 2004 Olympic Games in Athens, the Greek state decided to redevelop various sites, used during the Olympics. One of them was the area used for the Beach Volley games. Our proposal aims to create the suitable conditions, so that the Faliro Bay Area (southern Athens) can become a benchmark of supra-local importance, while having leisure and entertainment as its main characteristic. Thus, our architectural proposal creates a harmonic and flexible environment, whereas the entire existing facilities are being “exploited” with the same or a different use.



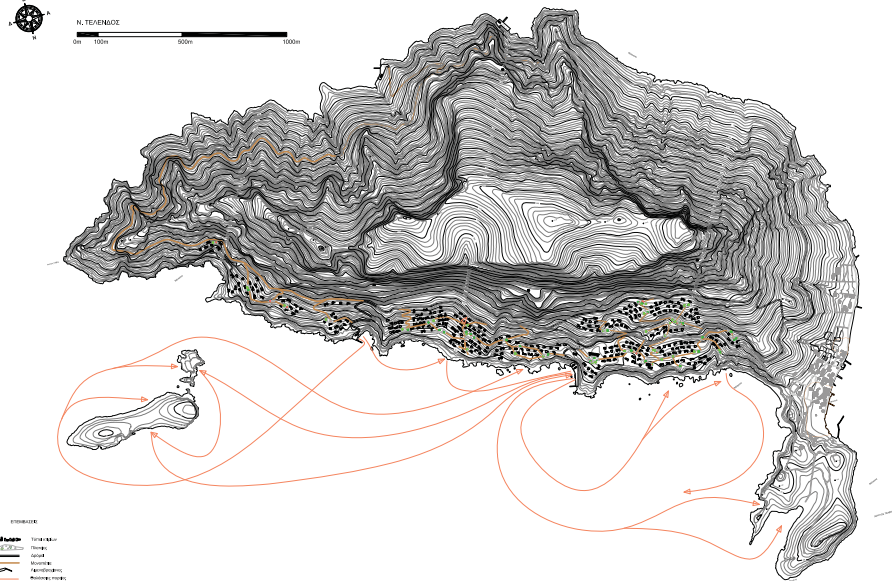
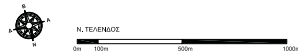
TELENDOS ISLAND

Title: Support of the Public Property Company for the tourist possibilities of the island of Telendos

Client: Public Property Company

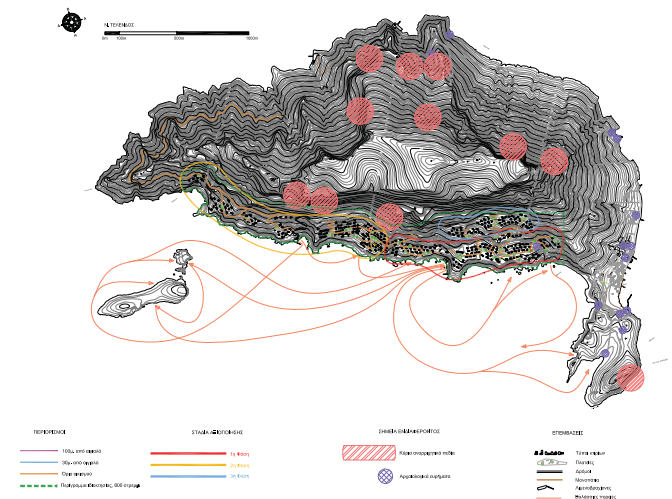
Year: 2014

Size: 4.659 acres



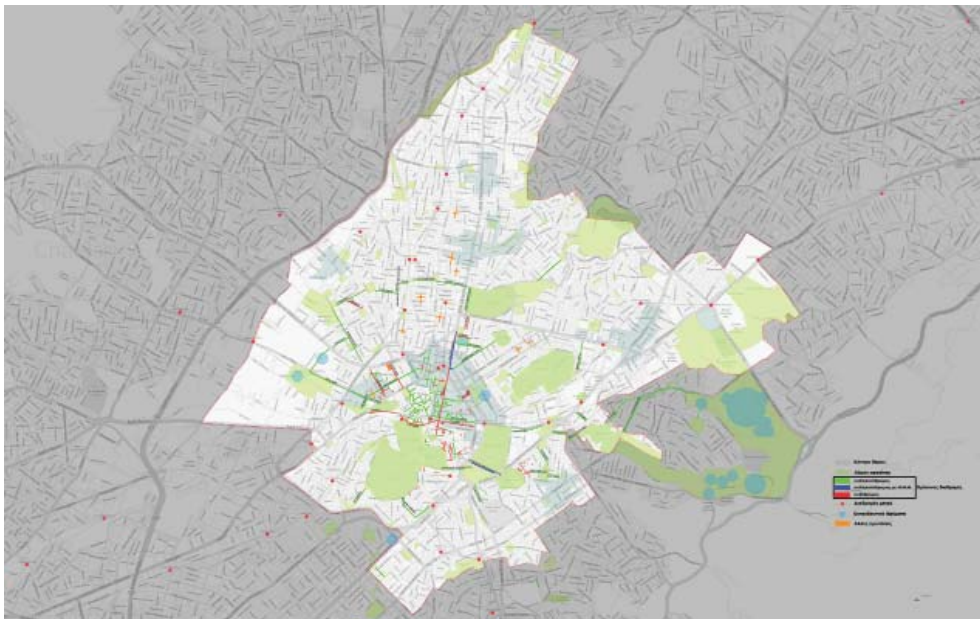
Description:

The assignment from the Greek Public Property Company was to make a research for the island of Telendos in order to find out ways to exploit the islands tourism possibilities. The island of Telendos is lockated near the Kalimnos which is one of the most popular climbing destinations in the world. The island of Telendos is as well a very popular climbing destination considering the composition of the rocky mountuns of the island. The Public Property Company has nowall the needed information for the oportunitiew that the island can provide.



ATHENS CENTRE REGENERATION

Title: Regeneration of Athens centre
Client: Municipality of Athens
Year: 2011



Description:

The historical area at the centre of Athens, proposed, in order to increase the visiting to connect by green lines and pedestrian streets, with the major green zones such as, Plato's academy, Gazi, Votanikos, Areos park, Likavitos, Strefi as well as with the university campus and Iera Odos. The connection anticipated by pedestrian roads network and conjugation with E.A.X.A. and the under regeneration squares of Athens green zones. The project started 20 years ago in Plaka and continued by the ministry of public work and E.A.X.A.. Moreover it was needed to re design some squares and the addition of a hotel in the end of Iera odos.



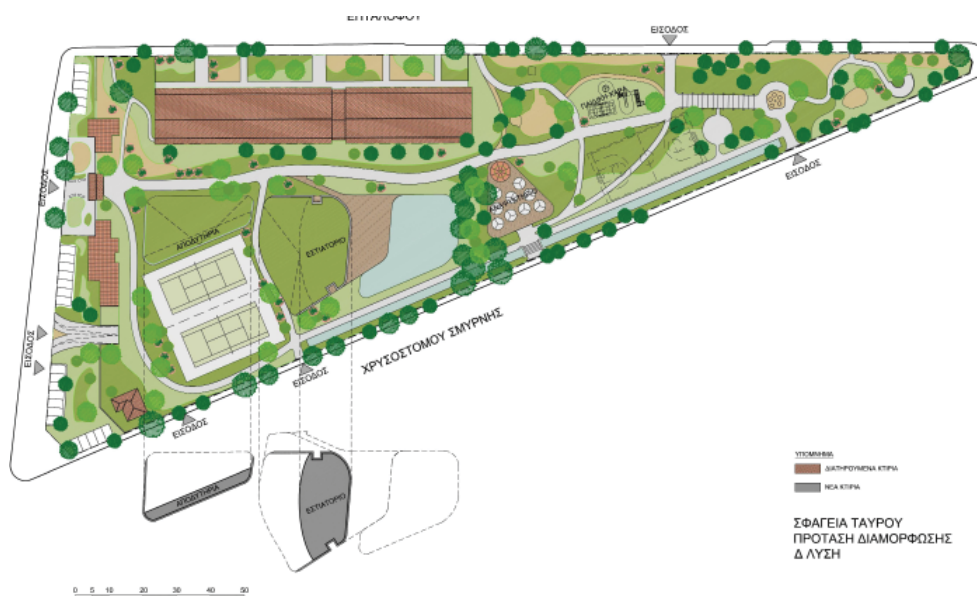
FORMER ABATTOIRS IN TAVROS

Title: Former Abattoirs House in Tavros

Client: Municipality of Moschato Tavros

Year: 2014

Size: 2.200 sq.m.



Description:

The recreation proposal for the former abattoirs of Tavros in the southern parts of Attica. The plot of the old abattoir is next to the municipality of Moschato Tavros. The regeneration proposal consists of coffee places restaurants tennis courts basketball courts and a big pool and is aiming to be the leisure center for the surrounding society.



OLYMPIC VILLAGE OF ATHENS

Title: Olympic Village housing
Client: "Athens 2004"
Year: 1999
Size: -



Description:

The Olympic Village housing was divided into two basic types lower density clusters of 4 to 6 dwelling unit arranged informally in loops and cul de sacs, and higher density apartment blocks arranged in a rectilinear street grid. The two types of housing are separated by a landscaped roadway/promenade and an open green area. The Olympic Village public facilities (international zone) are placed adjacent to the higher density apartment blocks.



INTRODUCTION	
WORKS	
XL	
L	
M	
STRUCTURE	
COLLABORATIONS	
CLIENTS	
LIST OF WORKS	

L

Offices

Retail

Hotels

Sports

Airports

Public Buildings

Industries and Logistic centers

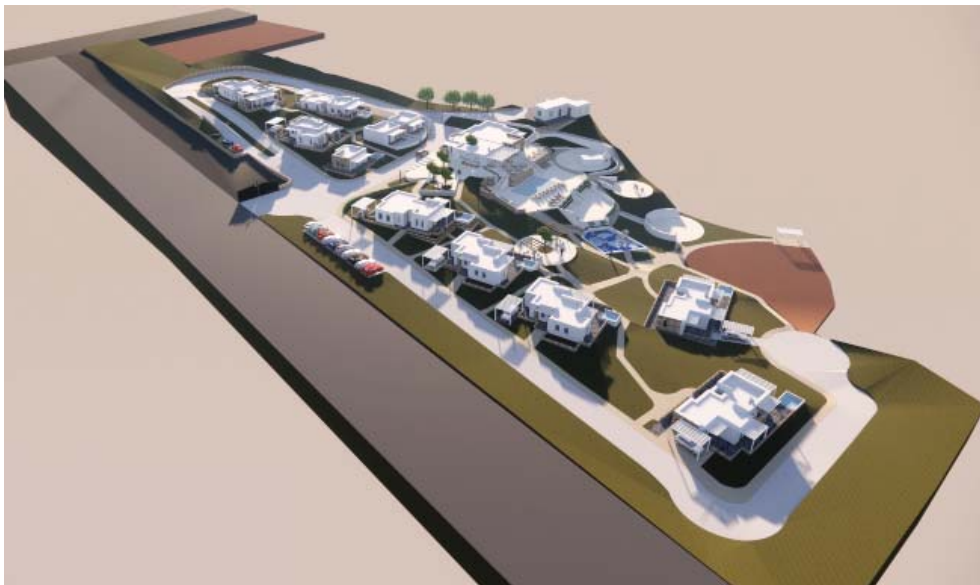


BOUTIQUE HOTEL PAROS

5* HOTEL IN PARIKIA, PAROS

Title: Boutique Hotel in Parikia, Paros
Client: XCN Investissements
Year: 2021
Size: 1.500 sq.m.

HOTELS



Description:

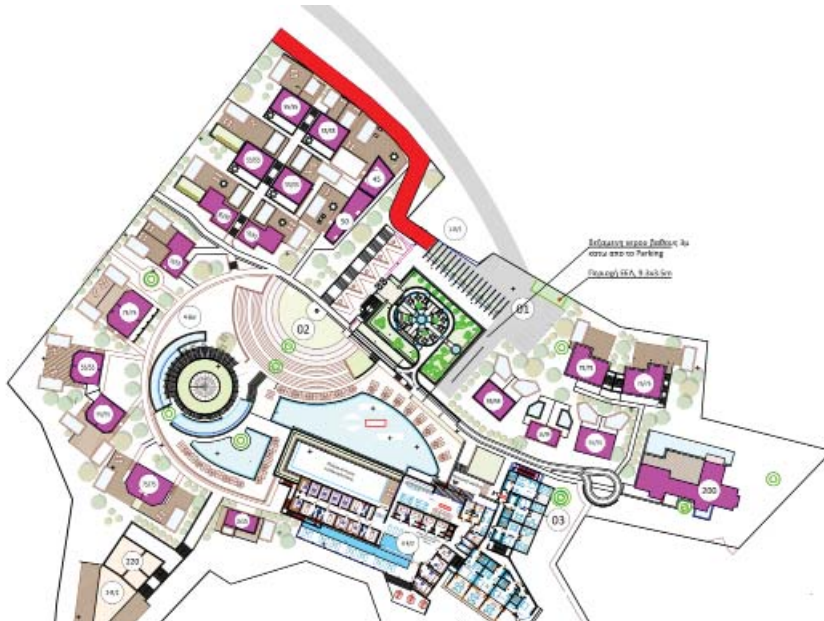
ARIS executed the design studies for the development of a new 5* Hotel, in one of the most prominent and idyllic areas on the cosmopolitan island of Paros. The plot is located at a mountainside with a direct view to the west and the sunset. It is expected to upgrade the touristic product of the capital of Paros (Paroikia) and attract high end clients.



EPIDAUROS HOTEL

5* HOTEL NEAR EPIDAUROS, PELOPONNESE

Title: 5* Hotel at Epidaurus
Client: Argolida Terra Group
Year: 2021
Size: 4.500 sq.m.



Description:

ARIS undertook on behalf of Argolida Terra Group the execution of the entire design services, regarding the development of a new 5* Hotel Complex near Epidaurus, Peloponnese. We focused our design into creating a high-level tourism destination, while respecting the morphological guidelines of the wider area and perfectly blending the buildings in their natural environment.



OFFICE BUILDING COMPLEX EX-KODAK PREMISES

Title: Office Building Complex at Marousi
Client: Private Fund
Year: 2021
Size: 16.000 sq.m.

OFFICES



Description:

This project concerns the ex-Kodak premises at Marousi. A.R.I.S. undertook all of the execution of the conceptual design study, for the regeneration of this brown field and the creation of a state-of-the-art building complex. The uses of the complex is mainly offices, but includes also retail on the ground floor.



DHL EXPRESS HELLAS

LOGISTIC CENTER & HEAD OFFICES, THESSALONIKI

Title: DHL Express, Thessaloniki Logistic Center & Head Offices
Client: DHL Express Hellas S.A.
Year: 2021
Size: 3.000 sq.m.



Description:

ARIS executed the design studies and offered technical consultancy services to DHL Express, regarding the new head offices and logistic centre of DHL at “Macedonia Airport” in Thessaloniki. DHL relocated to the new building their entire offices and warehouse. The new facilities are designed according to latest standards regarding environmental sustainability, are highly functional, are creating an aesthetic and pleasant workplace environment, and they are expected to support the company develop its activities in northern Greece.



ROCHE HELLAS HEAD OFFICES

Title: Roche Hellas, Head Offices in Marousi
Client: Roche Hellas
Year: 2021
Size: 6.500 sq.m.



Description:

ARIS undertook on behalf of Roche Hellas the execution of the entire design services, regarding the refurbishment of their head offices, located at Marousi, Athens. The study produced a design proposal which is characterised by functionality, environmental sustainability and high-level workplace environment, whilst promoting the company's values and corporate identity.



REGUS OFFICES, ATHENS

BAUHAUS / INDUSTRIAL OFFICES, ATHENS CENTER

Title: Regus Bauhaus Offices, Athens Center

Client: Adonex S.A. (Landlord)

Year: 2018

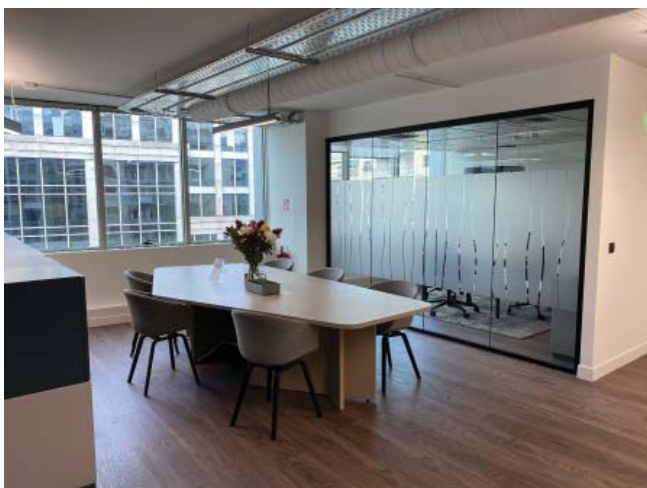
Size: 2.000 sq.m.

OFFICES



Description:

Our firm executed the architectural and electromechanical design studies and provided technical consultancy services, for the refurbishment of an existing building and the development of a start-up of the art offices. The offices were designed according to the Bauhaus design guidelines. Our main goals were to Maximize the space allocated to offices, business club and meeting rooms, to Reduce to a minimum circulation space and common areas and to Maximize the benefit from great external views and interesting building features.



CONSULTING FIRM HEAD OFFICES

Title: Consulting Firm Head Offices in Marousi
Client: Private
Year: 2021
Size: 2.500 sq.m.



Description:

ARIS undertook on behalf of Private Consulting Firm the execution of the architectural design services, regarding the refurbishment of their head offices, located at Marousi, Athens. The study took into consideration the company's distinct requirements and produced a highly effective workplace environment.



INDUSTRIAL BIO-FACILITY DEMO S.A.

Title: Warehouse and Industrial R&D Center, in Kryoneri
Client: DEMO S.A.
Year: 2021
Size: 8.000 sq.m.



Description:

DEMO assigned to ARIS the design studies (architectural, structural, ELM, geotechnical, topographical) for the development of their new Bio-Facility and industrial R&D centre in Kryoneri, Athens. The design aimed to produce a unique aesthetic result, while maintaining the interior functional and dedicated to the production lines, maximizing the storage areas and the R&D centre.



HOTEL & BUNGALOWS COM- PLEX AT “KALAMAKI”

Title: Hotel and Bungalows Complex at the area of Kalamaki, near Loutraki
Client: Noval Property
Year: 2019
Size: 20.699 sq.m. (construction surface)



Description:

On a plot of 112.000 sqm. we executed the design studies, and provided our client with technical consultancy services, for the creation of a complex Hotel resort, which comprised 872 beds in various types of bungalows, a hotel building, sports and leisure facilities and one all day bar - restaurant.



BERLIN SCHOENEFELD CITY HOTEL

Title: Berlin Schoenefeld City Hotel
Client: IGP
Year: 2018
Size: 8.200 sq.m.



Description:

The project was regarding the development of an 8 story hotel (4*) in the area of Schoenefeld. The total construction surface was 8.200 sqm and the development included 182 rooms / keys (360 beds), Restaurant, bar, cellar, and breakfast room, Gym, fitness, Congress center (with 3-4 meeting rooms), Reception, info desk and stores.



ASTOR HOTEL

Title: Astor (5*) Hotel near Syntagma Square
Client: ATEX S.A. (Kefalas)
Year: 2019
Size: 6.000 sq.m.



Description:

ARIS executed the design studies and undertook the on site supervision for the complete refurbishment of the five str hotel Astor, nearby the Syntagma Square, Athens.

This building is located at the heart of Athens, in close proximity to mayor archaeological and cultural attractions, and also within the centre of the Athenian nightlife.



DHL EXPRESS GATEWAY OFFICES, A.I.A.

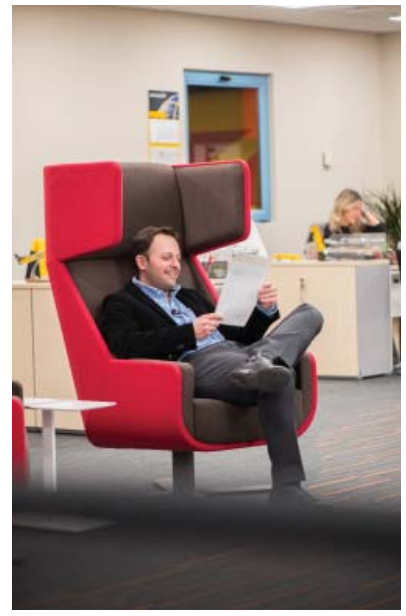
Title: DHL Express Gateway Offices & Logistic Center at the Athens International Airport
Client: DHL Express Hellas S.A.
Year: 2016
Size: 6.200 sq.m.



Description:

ARIS was the general designer (architectural, structural and ELM) for the refurbishment of the Gateway Offices and the expansion of the logistic centre of DHL Express at the Athens International Airport. We executed the entire design studies in collaboration with the BoD of DHL and according to the ICAO specifications.

During the next phases, of the project tendering and the construction, ARIS was assigned to the project management services and we completed the project on time and within the agreed budget.



GSK HEADQUARTERS

Title: Glaxo Smith Kline Headquarters
Client: Glaxo Smith Kline
Year: 2014
Size: 3.624 sq.m.

OFFICES



Description:

In cooperation with Redex S.A. we took part on a close competition for the Design and Construction of the new GSK headquarters. According to the tender call documents we produce the interior design images and the design of the surrounding areas and the parking space. The concept design was based on the, open space office design, which we had already apply in several other architectural projects and that is why we had a better understanding of the design. The renderings where produced with the cooperation of architects V. Mpountpoulos and G. Mpouses.



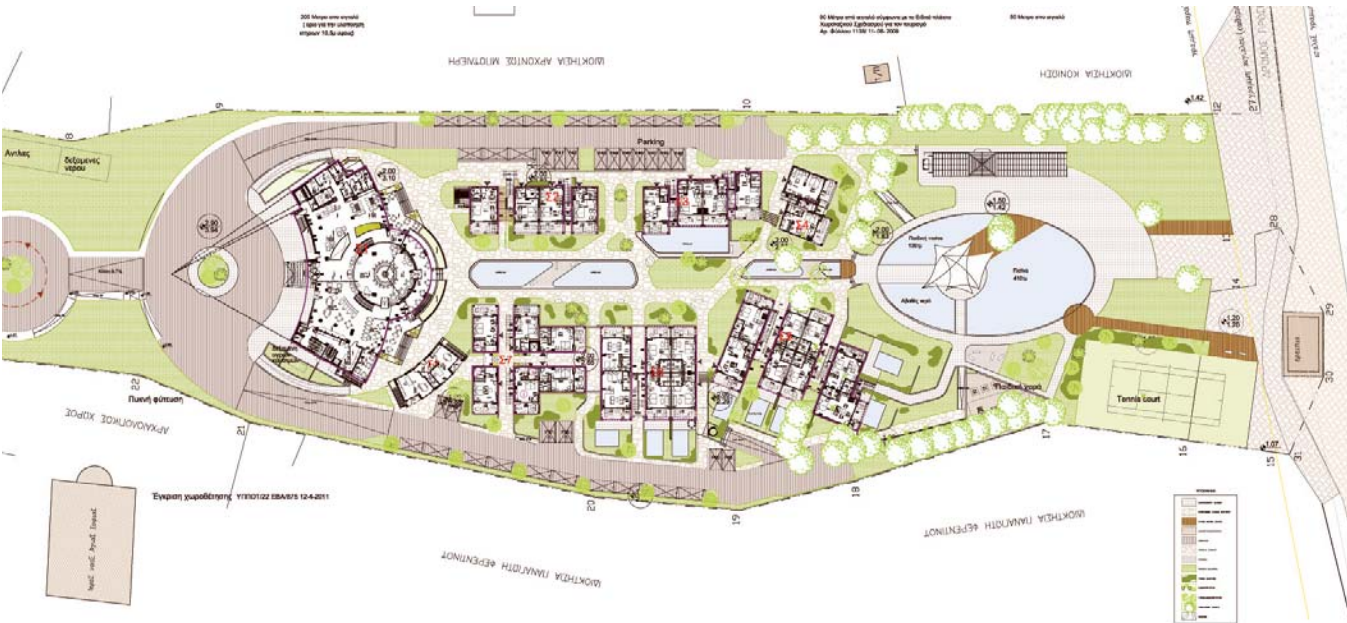
BETELGEUSE RESORT

Title: Betelgeuse Hotel & Resort in the North-West of Greece
Client: AITHON S.A. (K. Avdis)
Year: 2013
Size: 5.500 sq.m.



Description:

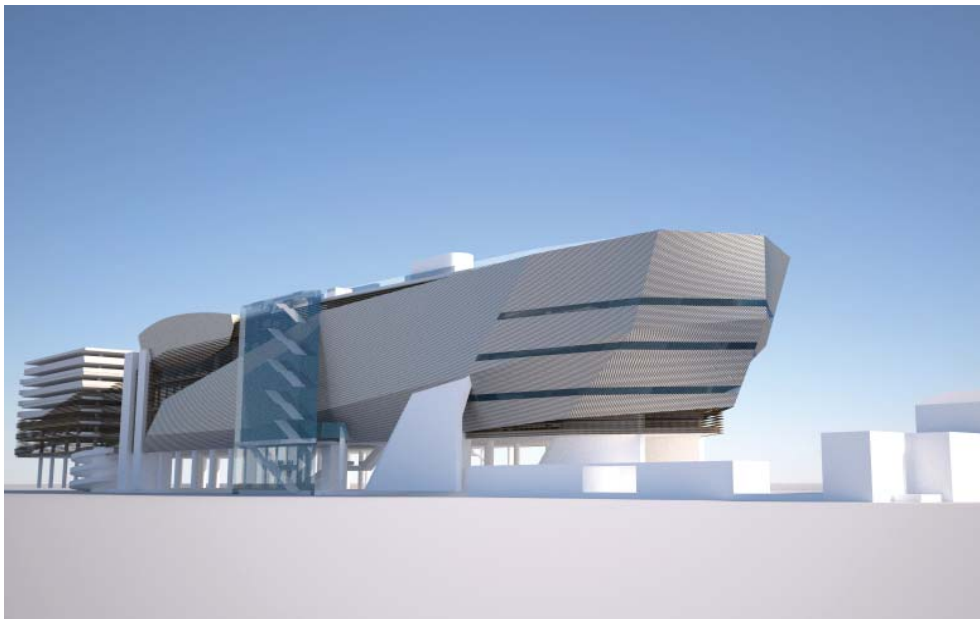
The hotel was designed on a plot of 22.000 sq.m. in northwestern Greece. The entire project comprises a central building, which includes rooms, a conference center, bars, restaurants etc. and 57 bungalows, with private swimming pools. The bungalows are connected to each other and to the central building through small pathways. However, they are also divided by small pools of water and swimming pools, together with a lot of communal “green zones”. Furthermore, within the surrounding area there is a tennis court, a large communal swimming pool and an open air bar. Our goal was to design and create, not just a hotel, but a landmark. ARIS was assigned to be the general planner of the project. After the completion of the design studies we carried on with the execution of the tender documents and completed the competition for the contractor.



PIRAEUS METRO MALL

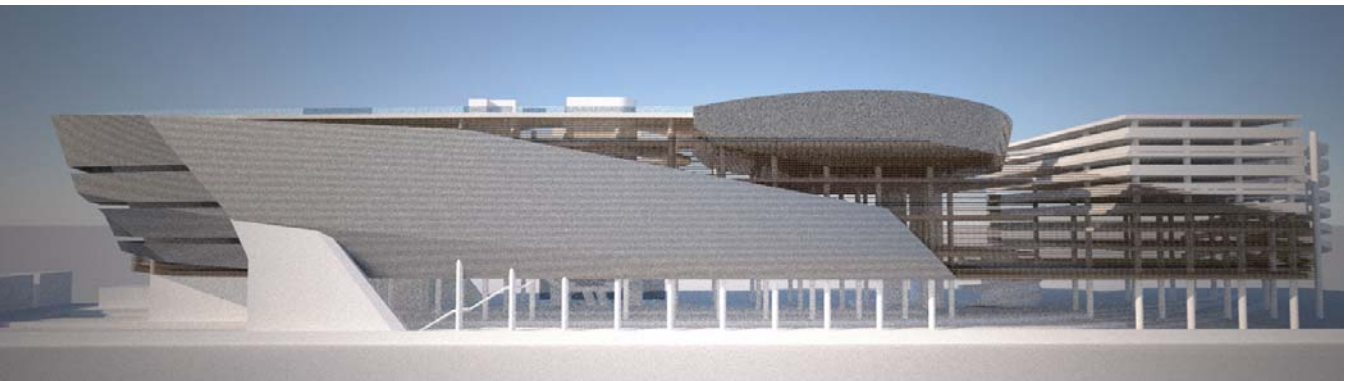
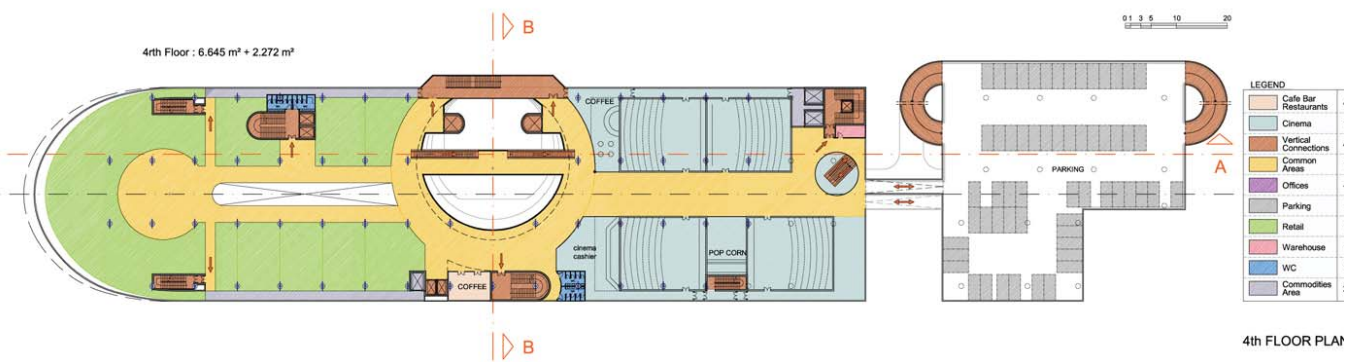
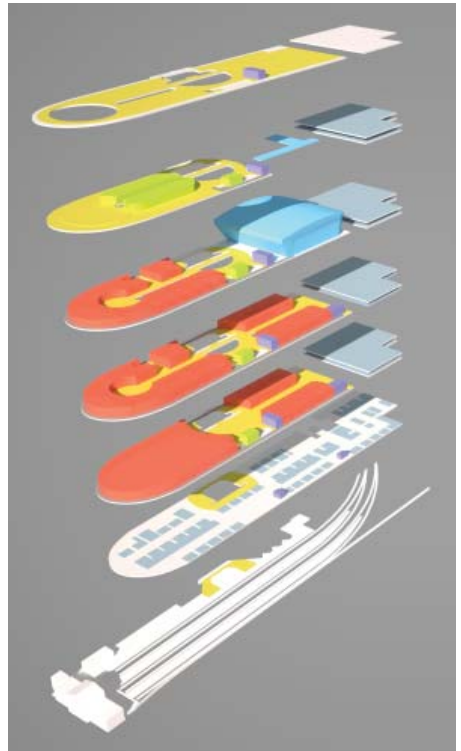
Title: Piraeus station metro mall
Client: Architectural design study
Year: 2014
Size: 37.500 sq.m.

PUBLIC BUILDINGS



Description:

The project was to design a new mall over the existing suburban railway station in Piraeus. The mall has a 9m. elevation difference to the station, so as to keep it operational. The entire structure is to be from steel and glass. Our design proposal illustrates a ship “floating in the air” with a total length of 230m. and a height of 35m. The mall areas include retail shops, cafeterias, restaurants, multiplex cinemas, offices, an open air pool etc. The structure of the mall is connected, through a bridge, to a 10 storey car park. This unique form of the edifice aims to give to the Piraeus Metro Station Mall the characteristics of a landmark.



INTERAMERICAN HEAD OFFICES

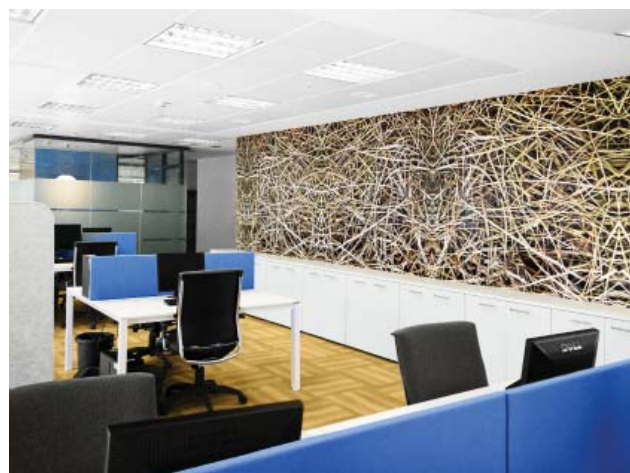
Title: Interamerican Head Offices
Client: Interamerican Hellenic Life Insurance Company
Year: 2013
Size: 6.500 sq.m.

OFFICES



Description:

Interamerican, part of ACHMEA, the leading insurance company of Greece, decided to relocate their head offices and the Millenium Bank Store and assigned to A.R.I.S. all of the necessary design studies of the interior along with the project management and the on-site supervision. One of our main fields of expertise is the research and development of evolutionary work environments, hence we successfully implemented in our studies new strategic planning approaches, such as “flexible working places” and “mobile working”. Through this we were able to minimize the required office space and thus we had the opportunity to create different “neighborhoods” that promote the company’s community spirit, whilst providing a variety of different work-settings in each “neighborhood”, available for all to use. The implementation of the “Interpolis Concept” (ACHMEA headquarters in the Netherlands) was one of the most challenging planning approaches we had to accomplish.



SIEMENS HEAD OFFICES

Title: Siemens Head Offices
Client: Siemens Hellas S.A.
Year: 2010
Size: 5.500 sq.m.



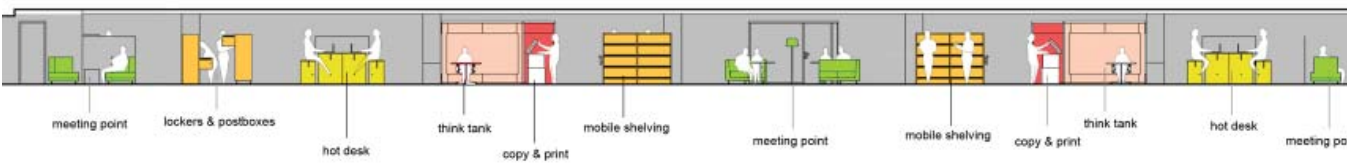
OFFICES

Description:

ARIS was assigned with the execution of the architectural, structural and electromechanical study, as well as the project management and the on-site supervision, regarding the new Head Offices of Siemens S.A. In our study we included all of our expertise, regarding the work-place environment and the state of the art strategic planning approaches e.g. “flexible working places” and “mobile working”. We designed and implemented different work-settings and thus created different “neighborhoods” that promote the company’s community spirit. The pure working stations were designed in an open space concept and we used visual separations and different floorings, in order to designate the different functions and departments of the company. Special electromechanical equipment e.g. sound masking systems, were installed with the aim of mitigating the noise impact on the employees and optimizing the work environment conditions. In addition to the above, through our innovative planning approach, we were able to reduce the area needed for the siting of the entire personnel.



Second floor - Wing B



Wing B typical section



POSTAL SAVINGS BANK AND POST OFFICE STORES

Title: Postal Savings Bank and Post Office Stores
Client: Hellenic Post
Year: 2012
Size: 70 stores

OFFICES



Description:

The Hellenic Post in order to proceed with the “Reorganization of Postal Bank Stores and Postal offices with the implementation of the New Corporate Identity in the entire region of Peloponnese and the Islands”, commissioned ARIS to execute a detailed Due Diligence of the possible sites and buildings for the accommodation of the postal services, and assigned to us also the Execution of the necessary Design Studies and tender documents for the commissioning of the contractors. Some of the services that we provided are indicatively:

- The depiction of the sites to be accommodated by the Postal Services, according to the building and functional program of the organization.
- The recording and description of the construction condition in which each site/building and its facilities are followed by a detailed design proposal for the required renovation, repair or improvement interventions.
- The preparation of a functional reorganization study for each Postal Service housed in each site based on the operational specifications delivered by the Hellenic Post and the preparation of an implementation study with the required plans.
- The preparation of the tender documents for the Public Procurement for the selection of a contractor for the construction of the project.

ATHENS GAS COMPANY STORE / SERVICE POINT

Title: Athens Gas Company Store
Client: Athens Gas Company (EPA Attikis)
Year: 2014
Size: 1.200 sq.m.



Description:

In 2014 A.R.I.S. completed the architectural, structural and electromechanical study for the new head store of the Athens Gas Company near Syntagma Square (Amerikis Str.). Our company was assigned the execution of the detailed design studies and the provision of technical advisory services for the relocation of the central Athens Gas Company store to Amerikis Str. The store, that was completely refurbished, acted both as a service point for the customers of the company, as well as a checkpoint for the engineering department. ARIS provided its services to the company and finalized them within the given budget and timeframe.

DHL EXPRESS CYPRUS SERVICE POINT STORE & HEAD OFFICES

Title: DHL Head Offices in Limassol, Cyprus

Client: DHL Express Hellas S.A.

Year: 2016

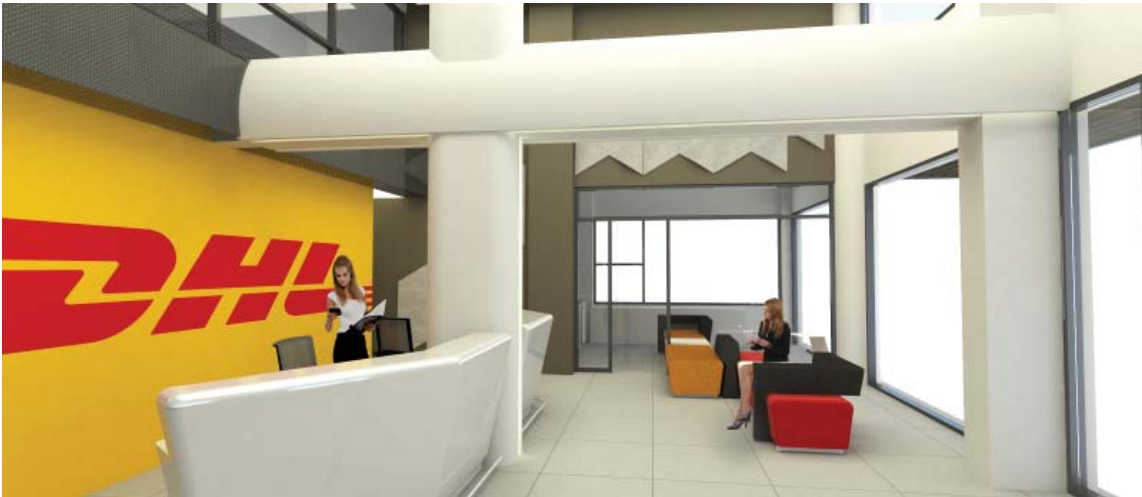
Size: 1.500 sq.m.

OFFICES



Description:

Our company was the general designer and project manager for the development of the new Store and Head offices of DHL at Limassol, Cyprus. We undertook the execution of all the design studies, we conducted a tender for the construction of the offices and were assigned with the project management and on-site supervision of the awarded contractor. This project was part of DHL's new design identity process and set the foundation for all future projects in Cyprus.



PEPSICO EUROPE HEAD OFFICES

Title: Pepsi Bottling Group Head Offices
Client: Pepsi Bottling Group Europe (PBG)
Year: 2006
Size: 300 sq.m.

OFFICES



Description:

Our firm provided PBG with designer, technical consultancy and project management services, regarding their new offices within the Atrina Office Building. The interiors were completely refurbished and new – modern materials with high aesthetic value were placed.



JAPAN TOBACCO INTERNATIONAL, HEAD OFFICES

Title: JT International Head Offices in Marousi
Client: JT International (JTI)
Year: 2004
Size: 1.500 sq.m.



Description:

In 2004 A.R.I.S. completed the architectural and electromechanical study for the new head offices of JTI, in Athens. During the construction period ARIS was assigned to the project management position. New planning approaches were implemented and custom made office equipment, designed by A.R.I.S., were integrated in the entire office area.



DHL GLOBAL FORWARDING HEAD OFFICES, PIRAEUS

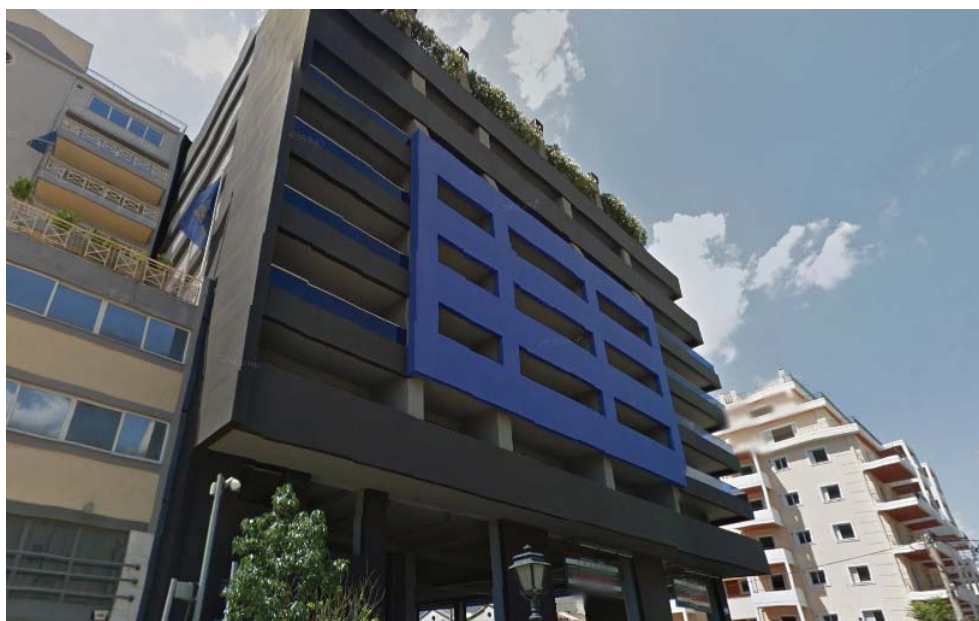
Title: DHL Global Forwarding, Piraeus Head Offices

Client: DHL Global Forwarding S.A.

Year: 2016

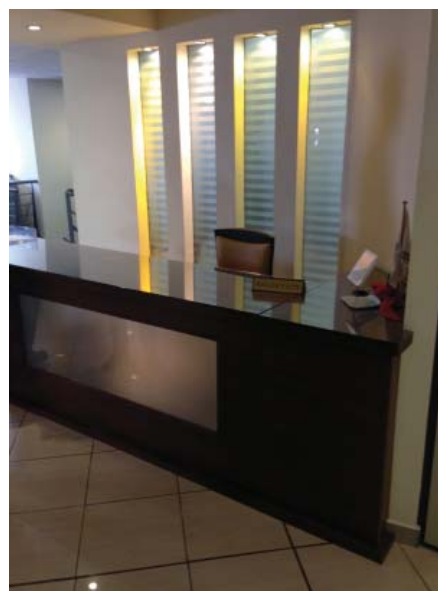
Size: 1.200 sq.m.

OFFICES



Description:

ARIS executed the design studies and offered technical consultancy services to DHL Global Forwarding. The building was an existing one, located in the heart of Piraeus. DHL decided to relocate there their entire offices and leased 4 floors of this building. The design study and the refurbishment changed significantly the layout and therefore the workplace environment.



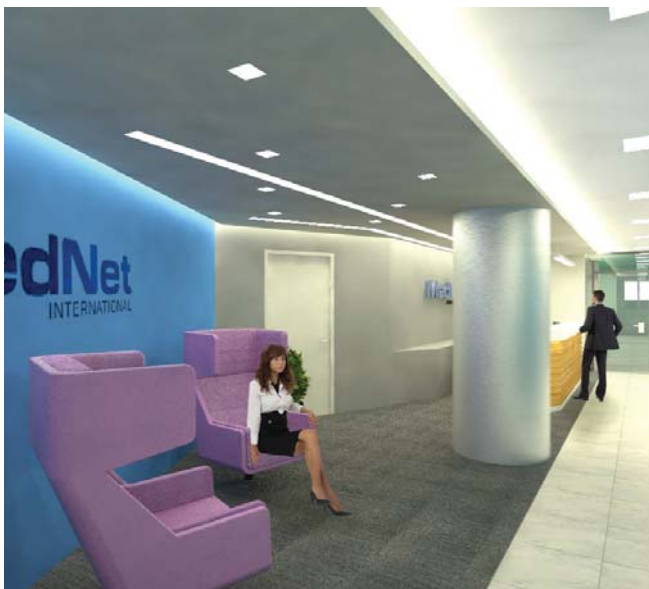
MEDNET INTERNATIONAL HEAD OFFICES

Title: MedNet International New Head Offices in Marousi
Client: MedNet International
Year: 2015
Size: 1.000 sq.m.



Description:

MedNet decided to relocate their head offices and assigned to ARIS the execution of a preliminary architectural study for the rearrangement of the new building. Their new offices are located in one of the most prominent areas in the north of Athens, easily accessible from the Attica Highway. In our study we have integrated the guidelines of “flexible workplaces”.



BACARDI HELLAS HEAD OFFICES

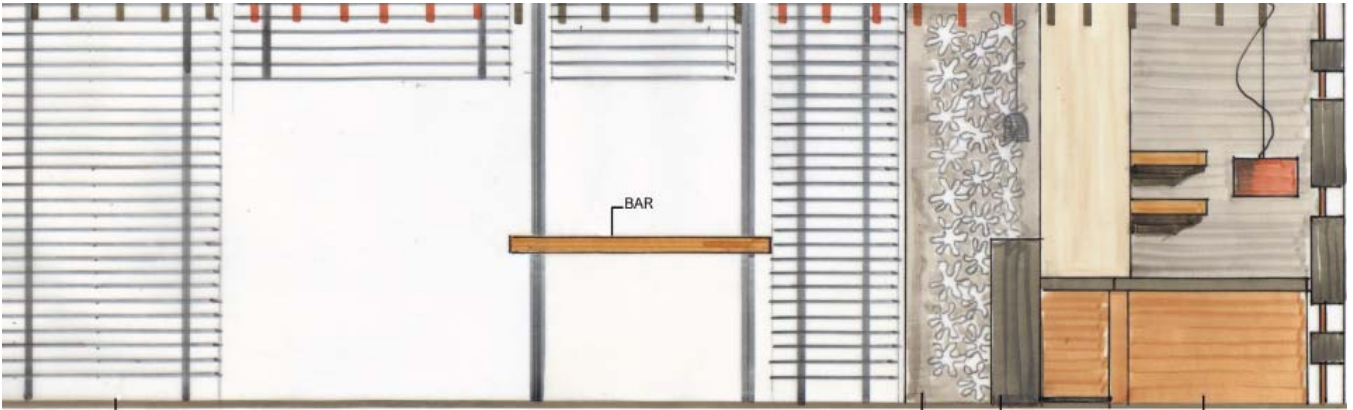
Title: Bacardi Hellas Head Offices
Client: Bacardi Hellas
Year: 2011
Size: 1.000 sq.m.



OFFICES

Description:

This project concerns the New Bacardi Hellas head offices. A.R.I.S. undertook all of the necessary design studies (architectural, electromechanical etc.), as well as the project management and the on-site supervision. The design studies and the construction were completed on time and within the agreed budget. The edifice is located in the northern suburbs of Athens, Greece, at an easy accessible area.



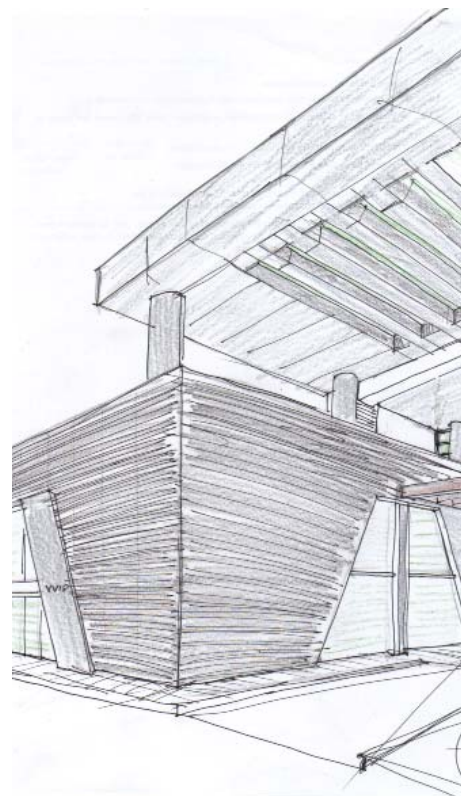
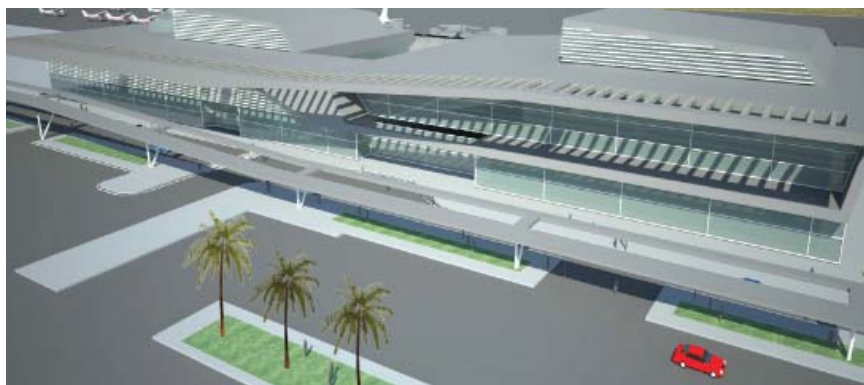
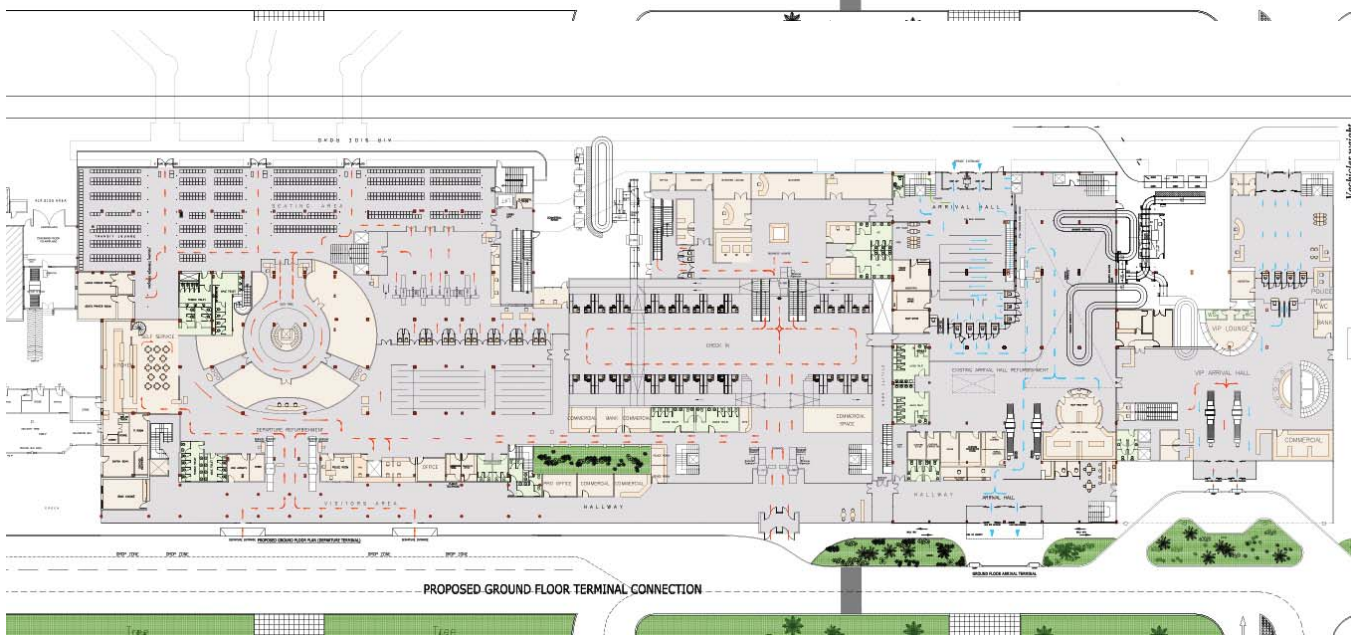
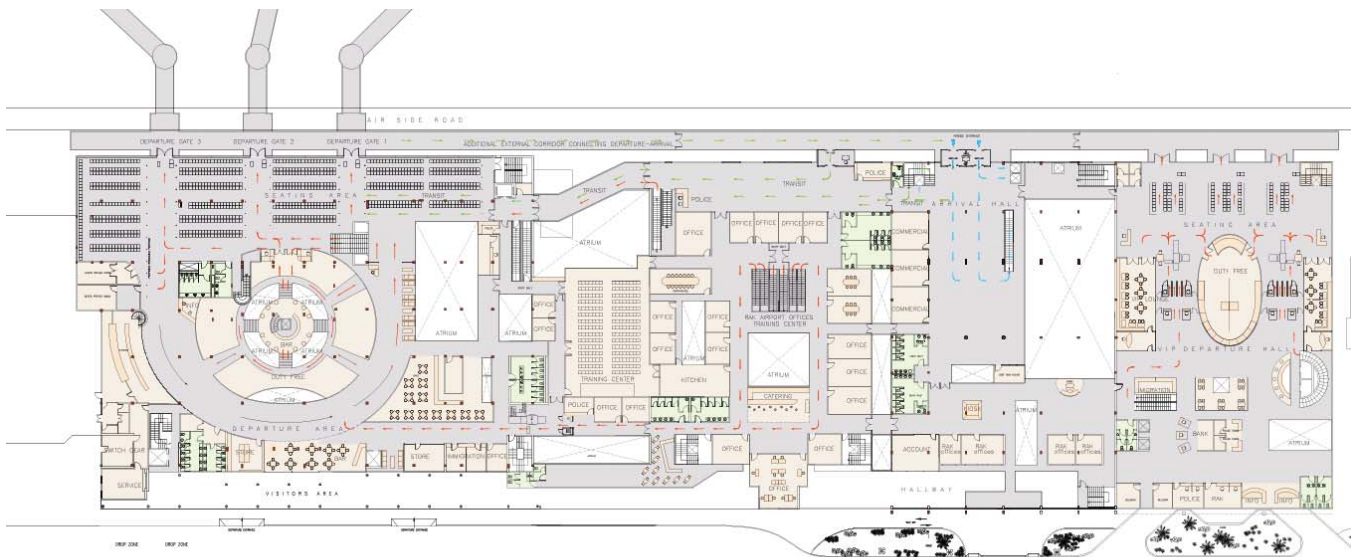
EXPANSION OF RAS AL KHAIMA INTERNATIONAL AIRPORT

Title: Ras Al Khaimah International Airport, (UAE)
Client: RAK Government / Public Work And Services Department
Year: 2011
Size: 40.000 sq.m. (expansion) & 25.000 sq.m. (existing)



Description:

A.R.I.S. undertook, in collaboration, the execution of the architectural design study concerning the expansion of the Ras Al Khaimah International airport. The construction surface of the expansion was approximately 40.000 sq.m. In our study we considered the existing facilities, as well as the local architecture guidelines.



MALTA AIR TRAFFIC CONTROL CENTER

Title: Malta Air Traffic Control Center
Client: Government of Malta, Department of Contracts (tendercall)
Year: 2016
Size: 40 m. high (Tower) 5.800 sq.m. (Administration Building)

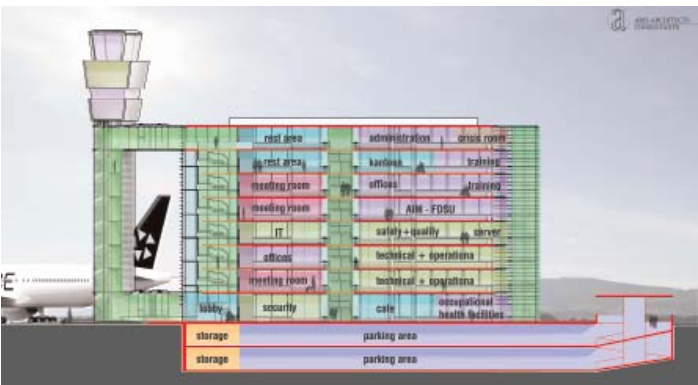
ARCHITECTS
JLTANTS

AIRPORTS



Description:

A.R.I.S. participated in the international contest for the design of the new Malta Air Traffic Control Center and designed the new control tower (VCR) and the administration building (ACC). Our proposal took into account, the needs and instructions of the Contracting Authority and is in line with the ICAO specifications and practices. Also, we examined carefully the wider area of the project and the surrounding buildings' environment. The dimensions, the height and the proposed uses are according to the Malta Air Traffic Services (MATS) needs, the ICAO standards and were developed from our key experts and our experience, in similar projects.



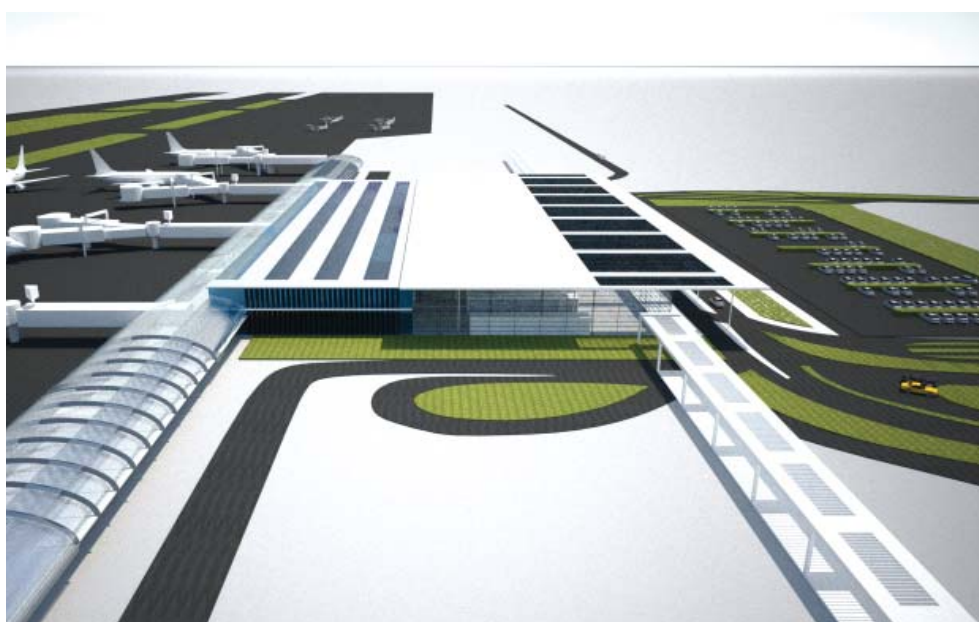
CRETE KASTELI AIRPORT

Title: New Airport in Kasteli, Crete (Greece)

Client: Louis Berger Group

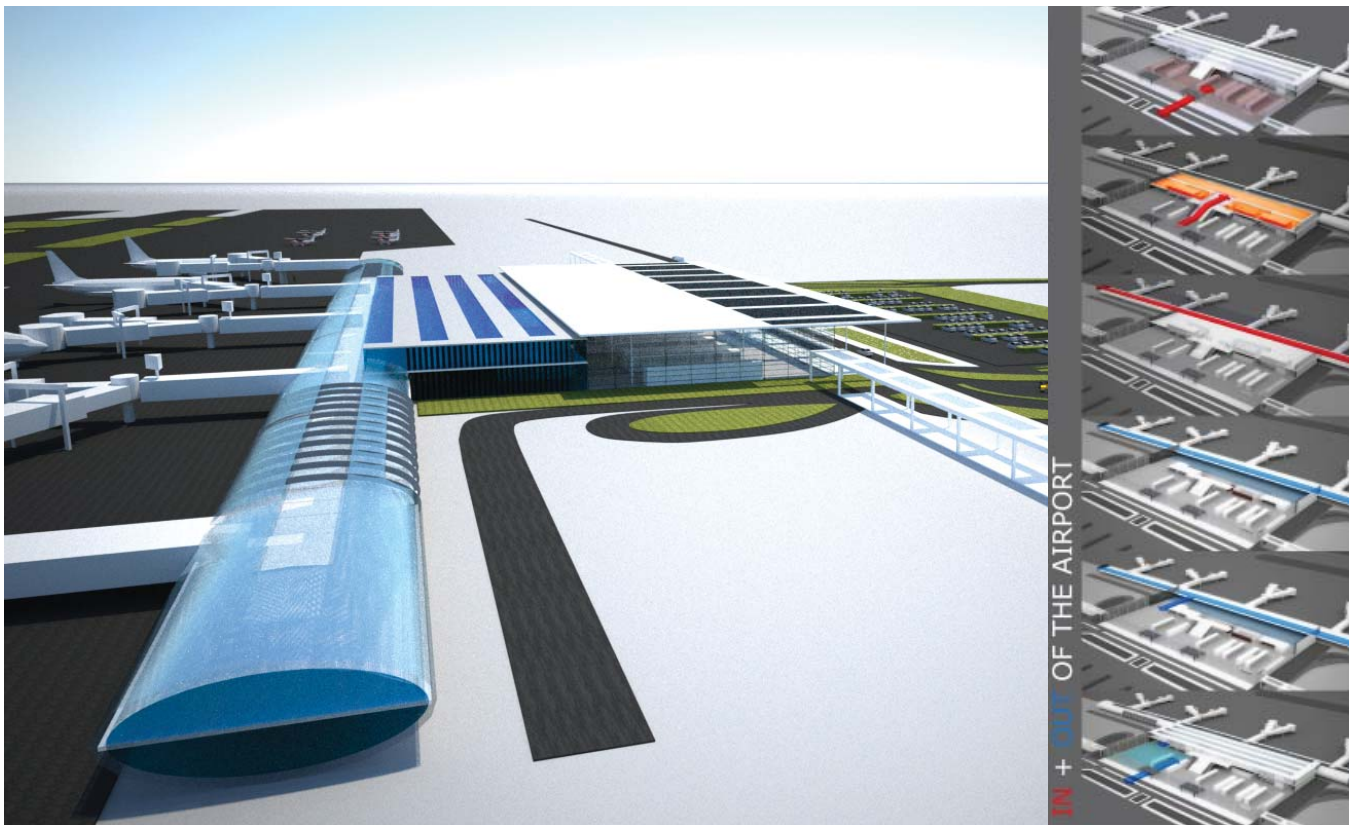
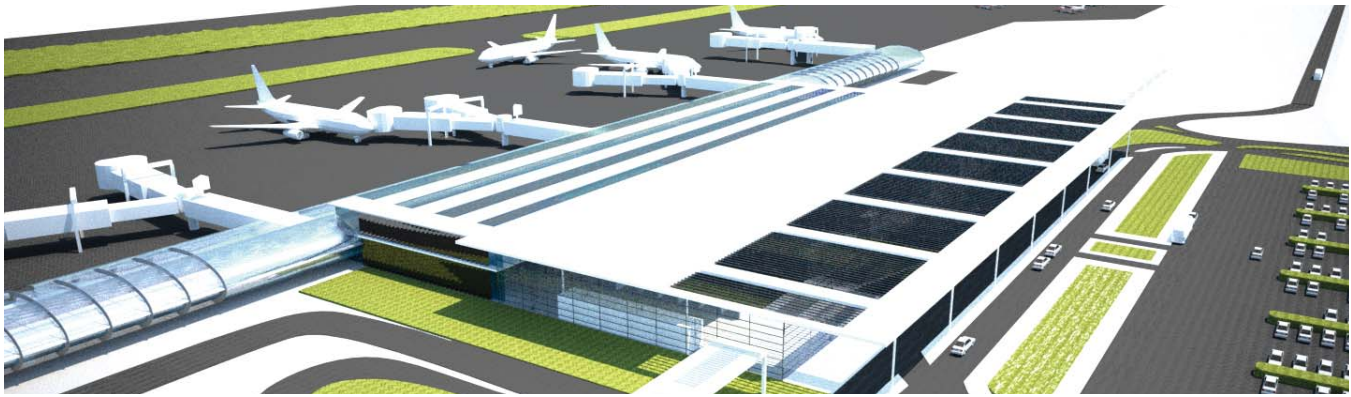
Year: 2011

Size: 25.000 sq.m.



Description:

The new airport in Kasteli is going to replace the existing one, which is located in Heraklion, Crete, according to the tender documents of the project. Louis Berger Group, as part of a larger consortium, undertook the preparation of the preliminary design studies, according to the tender-documents of the project. Louis Berger assigned to A.R.I.S and M.Mitropoulos, to operate as the design export, for the study development, presenting the scenarios, and the evaluation of the 4 different conceptual design proposals. Our firm, considered the entire available tender-data and prepared a comprehensive review, while suggesting alternative scenarios for the airport's architecture.



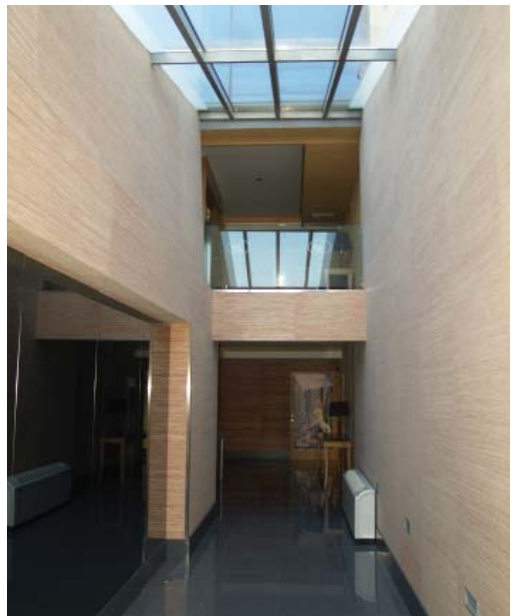
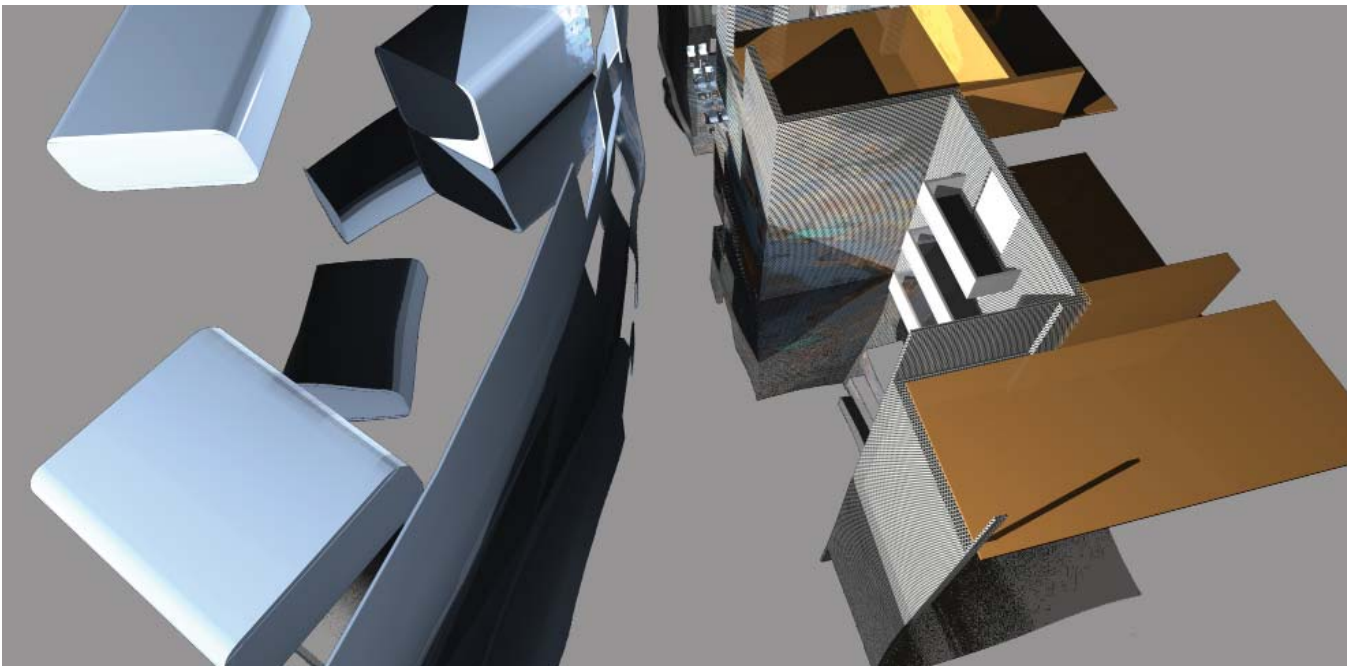
LUXURY HOTEL IN KASTORIA

Title: Luxury Hotel in Kastoria (northern Greece)
Client: Smaropoulos S.A.
Year: 2007
Size: 2.500 sq.m.



Description:

The hotel was designed within a plot of 11.000 sq.m. The rooms were designed with a view to the nearby lake. In our study we considered the local traditional architecture, which includes stone coatings and wooden frames and combined it with modern yet “natural” materials. The hotel interiors consist of a variety of room types, as well as many communal areas e.g. multiuse areas, restaurants, bars, gym, congress center. The exteriors contain among others a swimming pool, a large garden etc, and all of them are connected with paved pathways. ARIS was the general designer and project manager of the development.



UNITED DISTILLERS & VINTNERS, HEAD OFFICES

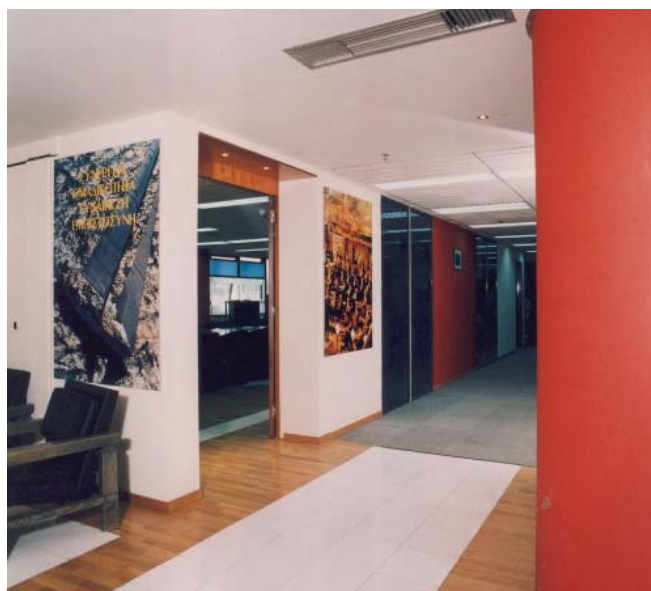
Title: UDV Head Offices
Client: United Distillers & Vintners
Year: 2000
Size: 4.000 sq.m.

OFFICES



Description:

Our firm executed the architectural and electromechanical study for the new head offices of UDV Hellas, which is now part of DIAGEO S.A. Furthermore, we provided UDV with Project and Construction Management Services. The new edifice was reconstructed, so as to accommodate the company's personnel, in an open space working environment.



MCCANN ERICKSON HELLAS HEAD OFFICES

Title: McCann Erickson Hellas Head Offices
Client: McCann Erickson Hellas
Year: 1999
Size: 3.500 sq.m.



Description:

Our company carried out the entire design studies for the new head offices of McCann Erickson and provided McCann with project management services. The idea behind our study, was to create state of the art facilities, able to promote the company's products and spirit. The fact that McCann Erickson is one of the biggest advertising companies, gave the opportunity to our team to interact with their team of creative experts. As a result we were able to suggest modern materials and design methods, which were easily accepted. The end result was an extraordinary office building, worthy of McCann Erickson's reputation.



SIEMENS WERKSTATT

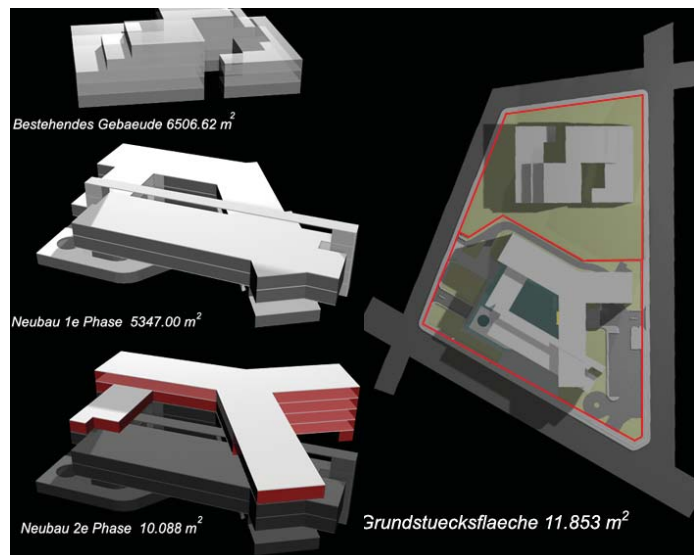
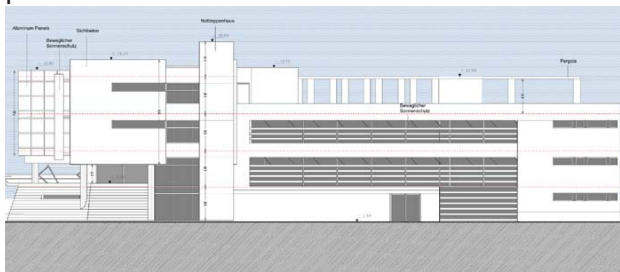
Title: Siemens headquarters
Client: SIEMENS
Year: 2003
Size: 15.420 sq.m.

OFFICES



Description:

The outdoor spaces and entrances are conceived in a way to improve the public circulation around the building and inside the atrium and act as places of socialization and interaction. The image of the company is very much depending on the form of its headquarters and the way people conceive and experience its special structure. The proposal meets this important need by being the central idea of its composition on the formation of building volumes connected with a network of outdoor spaces and public circulation routes.



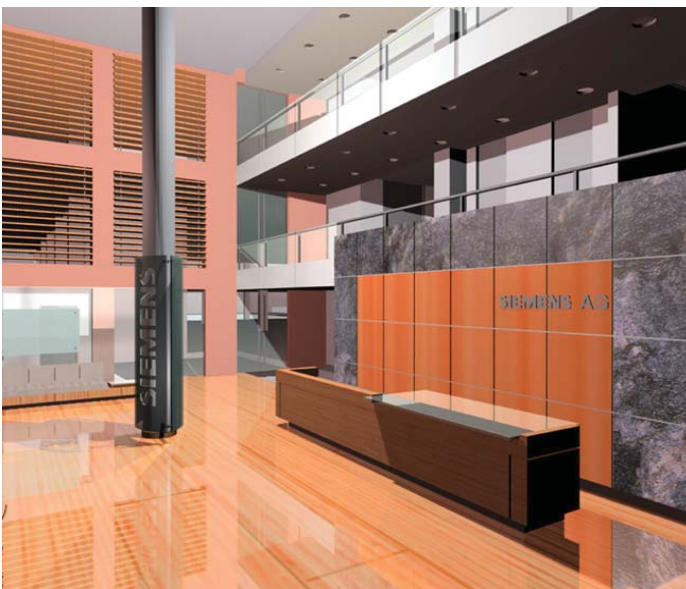
HOSPITAL N. ERYTHREA

Title: Hospital & Day Clinic
Client: Private Investor
Year: 2003
Size: 8.147 sq.m.



Description:

The present building has 4 basements, ground floor, 3 floors and it has been built as a Hospital and Day Clinic Center. In addition this building has been calculated with the prevision of a 4th floor. The three lower basements have the use of garage and the upper one has the use of mechanical floor. The upper ground floors have the use of Hospital and Day Clinic Center.



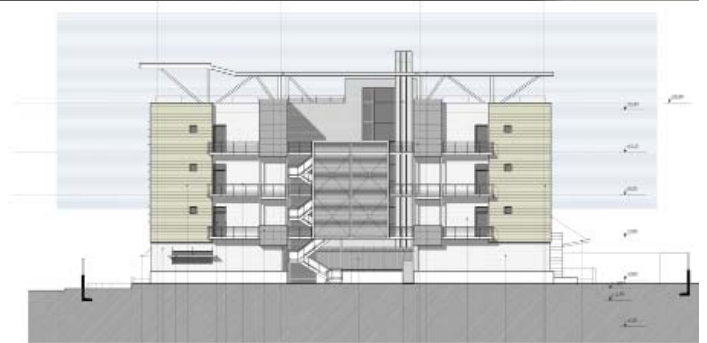
POLICE DEPARTMENT IN ACHAEA

Title: Police Department in Achaea,
Peloponnese

Client: ATHINA A.T.E.

Year: 2004

Size: 5.500 sq.m.



OFFICES

VILLAGE HOTEL

Title: VILLAGE ROADSHOW HOTEL

Client: VILLAGE ROADSHOW GR A.E.

Year: 2004

Size: 7.180 sq.m.



FOURLIS HEAD OFFICES

Title: Office building

Client: FOURLIS

Year: 2009

Size: 8.200 sq.m.



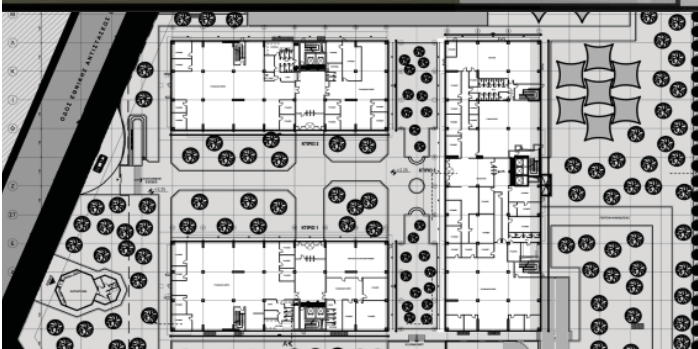
VODAFONE MAROUSHI

Title: Vodafone Head offices

Client: Private competition

Year: 2005

Size: 14.000 sq.m.



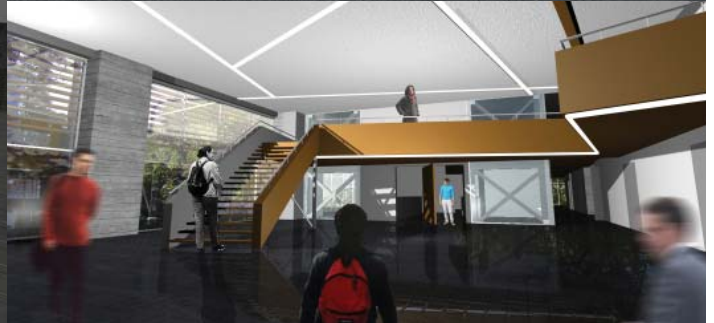
TEI ATHENS

Title: TEI Athens

Client: TEI

Year: 2008

Size: 2.743 sq.m.



OFFICES

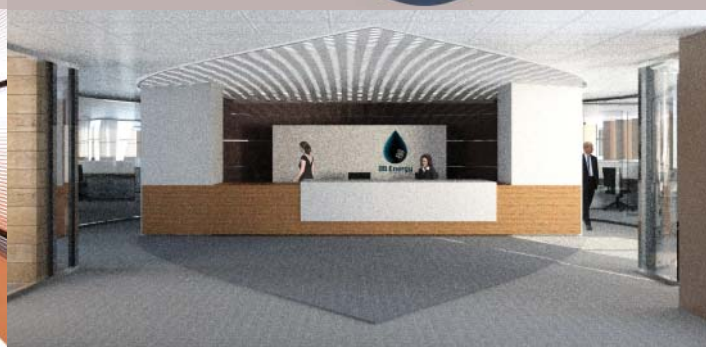
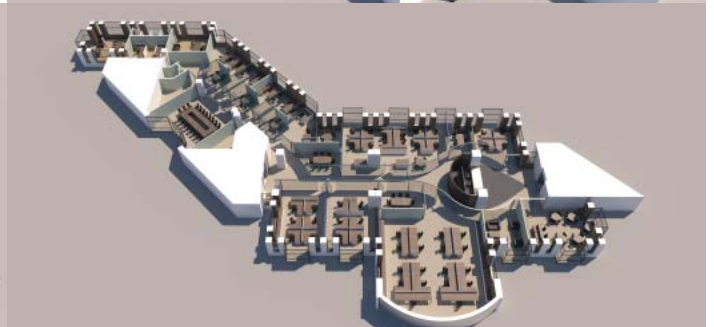
BB ENERGY HEAD OFFICES

Title: BB Energy Head Offices

Client: BB Energy

Year: 2013

Size: 1.265 sq.m.



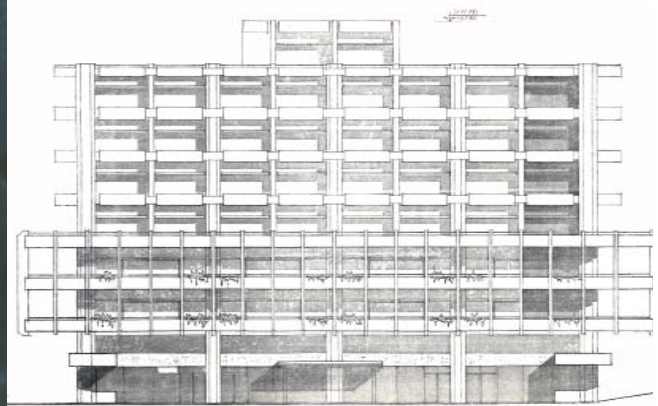
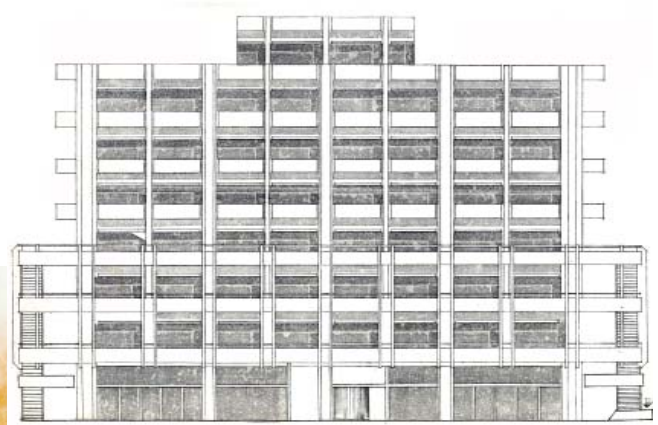
OFFICE BUILDING SIGROU 157

Title: Office building

Client: Mathiopoulos

Year: 2005

Size: 14.000 sq.m.



OFFICE BUILDING SIGROU 132

Title: Office building

Client: Mathiopoulos

Year: 2005

Size: 14.000 sq.m.



LIFE GALLERY

Title: Title: Life Gallery Hotel in Ekali
Client: Mirasol S.A. (T. Mamidaki)
Year: 2004
Size: 3.400 sq.m.



Description:

The hotel was designed and built, in collaboration with the internal team of Mirasol S.A., in one of the most prominent suburbs in the north of Athens, Ekali. The concept, in the level of preliminary design, follows the minimalist architecture, with a steel-glass façade, Zen gardens and ethnic elements, harmoniously integrated in the surrounding nature. The facilities include, among others, 30 luxurious rooms, a congress center, a SPA, a bar and an award winning restaurant. The Building Energy Management System (BEMS) installations are state of the art providing relatively lower running costs. ARIS executed the design studies and was also the project manager of the development.



ATHENS CITY CENTER RESORT

Title: Athens City Center Tourism Resort & Cultural Center
Client: Noval Property (Viohalco Group)
Year: 2018
Size: 57.610 sq.m. (construction surface)

HOTELS



Description:

ARIS executed the urban design studies, the preliminary architectural design studies and the business plan for the regeneration of an old industrial plot, close to the Athens city centre, and the development of the first Tourism Resort in the centre of Athens. The development comprises 2 Hotels, One Tower – restaurant, as a landmark, a shopping centre, a Rehab centre, a Cultural & Congress Centre, a High Technology training centre, a Business centre, an Exhibition centre, Athletic and supporting facilities.



ECO TOURISM RESORT AT MONEMVASIA

Title: Eco-Tourism Resort at Monemvasia, Peloponnese
Client: Malvazia Ltd.
Year: 2018
Size: 2.000.000 sq.m. (plot area)



Description:

In an area over 2.000.000m², with a sea front of 3.200m., ARIS executed on behalf of Malvazia Ltd. the design of a complex tourism facilities focused in eco hospitality. The development consist from, 32 two-story bungalows in a "village" spatial planning design proposal, 60 private summer houses, all around of a plateau, a farm for horse-riding, Farms for livestock breeding, poultry and seeps, a thematic and entertainment park, a convention Center and a Restaurant.



HOTEL AND RESORT ON THE ISLAND OF NAXOS

Title: Hotel and Resort on the island of Naxos, Cyclades
Client: K. Tsarouchas
Year: 2018
Size: 10.000 sq.m. (construction surface)

HOTELS



Description:

ARIS executed the architectural design studies and provided technical consultancy services, for the development, of 2 hotels in the mountain side of southern Naxos, in the region "Pirgaki".



VILLAGE HOTELS AND SUITES

Title: Village Hotels and Suite
Client: Village Roadshow
Year: 2018
Size: 4.200 sq.m.



Description:

The development and the study concerned the demolition of the upper ground cinema's complex, while maintaining the 3 underground parking levels, and the proposal of a new hotel and suites building. Finally, we decided to keep the existing concrete constructions, in the ground level and develop above this (level) a 3 story building, of a four (4) star hotel & suites.



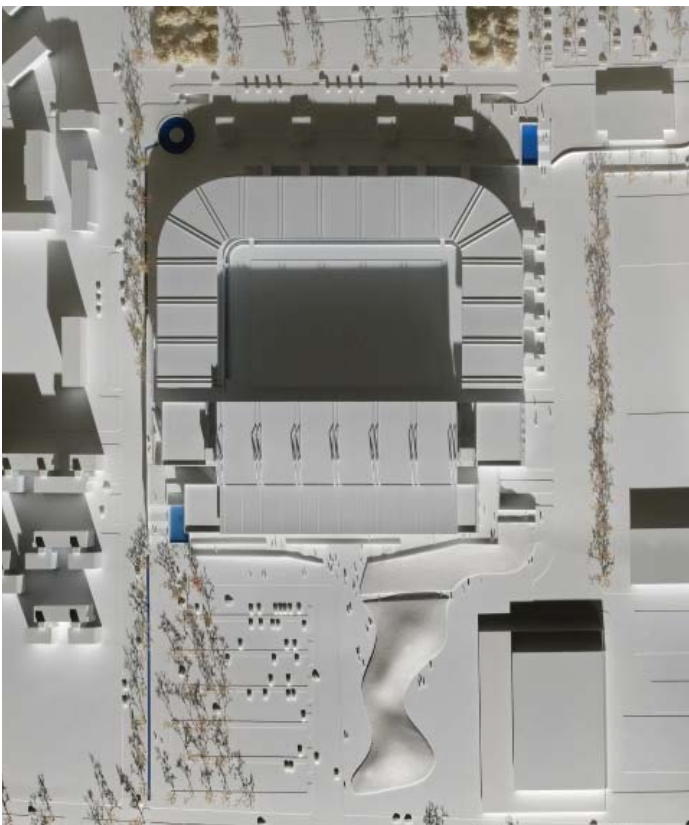
HERCULES F.C. FOOTBALL STADIUM

Title: F.C. Hercules New Football Stadium in Thessaloniki, Greece
Client: F.C. Hercules
Year: 2010
Size: 22.000 seats



Description:

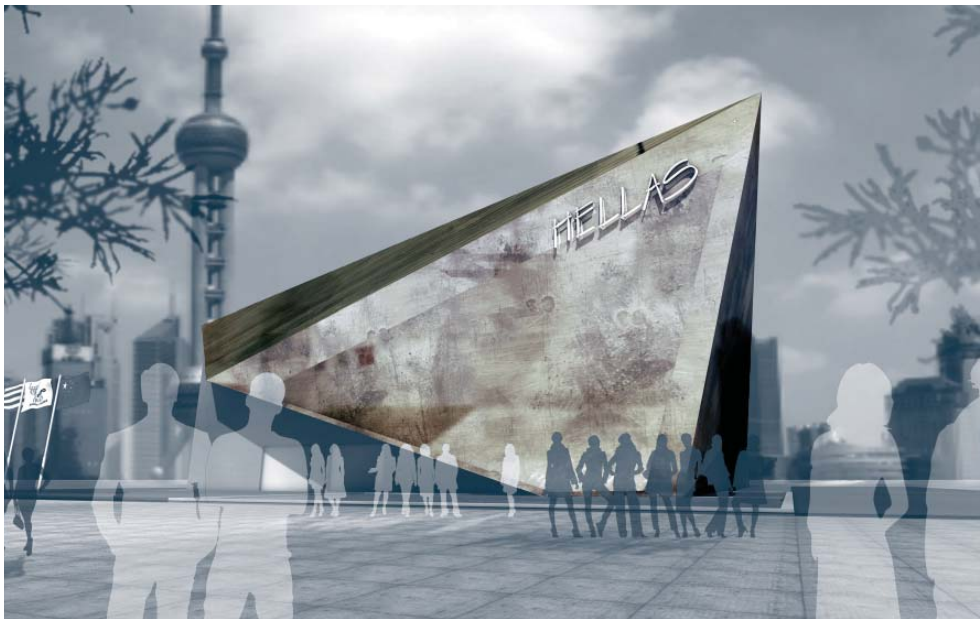
Development of an athletic complex, which consists of a football stadium (22 thousand seats), training rooms, auxiliary areas and a shopping & commercial center of approximately 10 thousand square meters. The shopping center is to be considered as an autonomous facility. The project comprises also a parking lot of 900 parking spaces. The new football stadium of F.C. Hercules was planned on a plot of 56.000 sq.m., nearby the Thessaloniki International Airport.



2010 SHANGHAI EXPO GREEK PAVILION

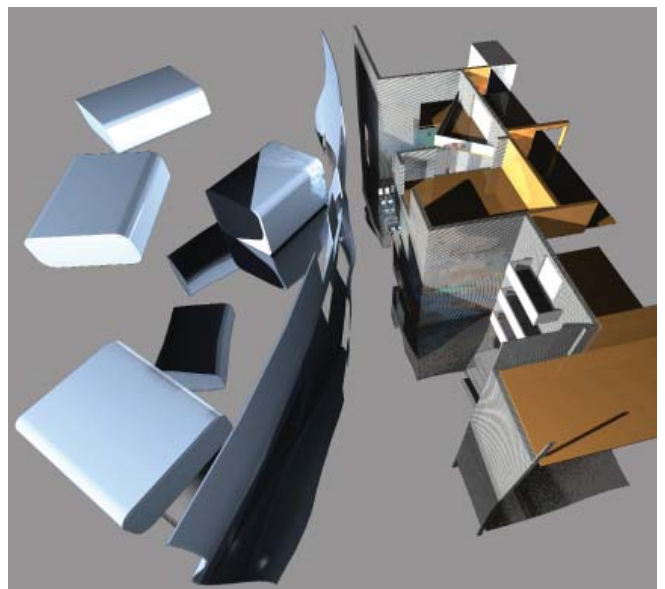
Title: Greek Pavilion for the Shanghai Expo 2010
Client: Architectural Competition
Year: 2009
Size: 1.500 sq.m.

LANDMARKS



Description:

Our proposal for the Greek Pavilion of the EXPO 2010 in Shanghai was a building designed to outline the characteristics of the country by exposing the specialties of every region. Mainly deviding in two diferent design styles the archipelagos of the Aegean sea with the mainland the visitor can travel threw Greece just by visiting the pavilion.



FALIRON LANDMARK

Title: Faliron landmark
Client: Architectural competition
Year: 2012
Size: 550 sq.m.



Description:

The design of a landmark which will be the peak of the new park, designed by Renzo Piano Building Workshop, was the challenge of the competition. Our proposal was a design which will give this landmark the image of an object at the point of the take off. It would have been a symbolic gesture of the new age of Greece starting from the coasts of Attica.



PANATHINAIKOS F.C. FOOTBALL STADIUM

Title: New Football Stadium of Panathinaikos F.C.
in Votanikos, Athens

Client: KONKAT S.A.

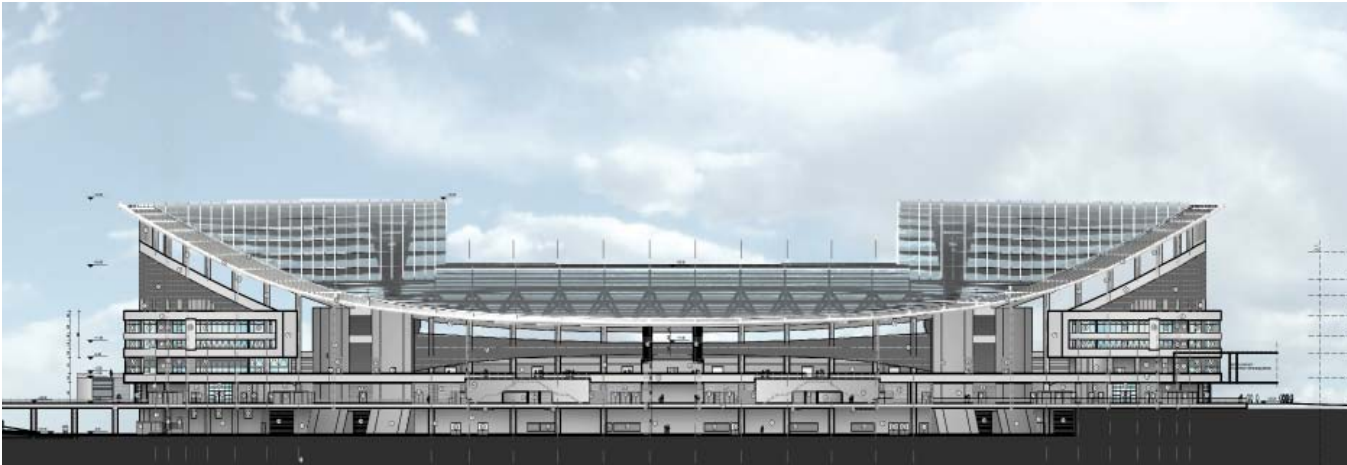
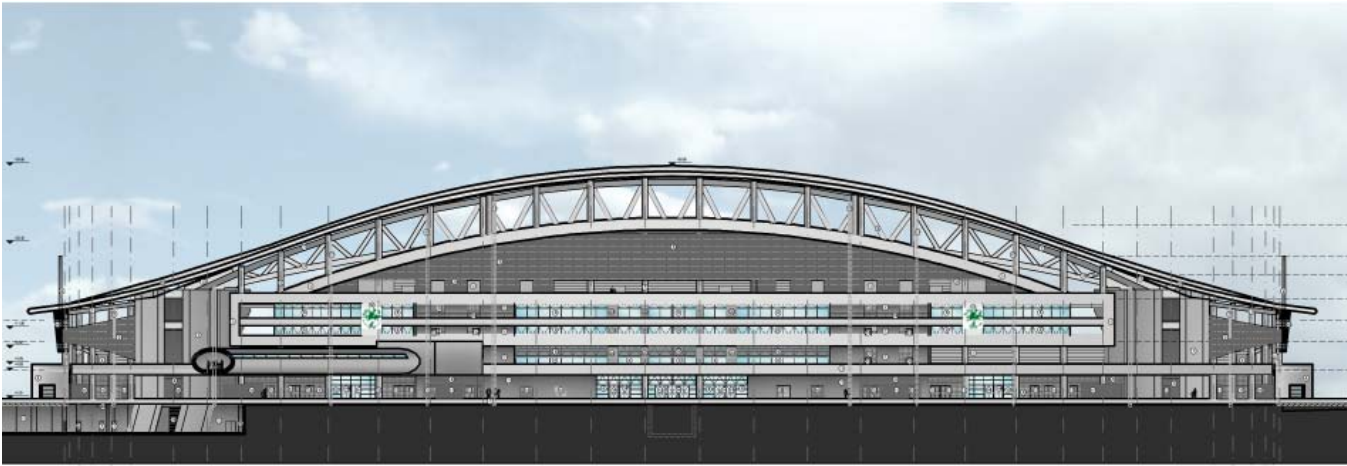
Year: 2006

Size: 42.000 seats



Description:

The relocation of the Stadium of Panathinaikos was part of a wider regeneration program of Athens City Center. The objective was to create an important center for professional and amateur sports, within a wider area. Our architectural design study for the stadium took this in to consideration and therefore the end result is a construction within a wide open area, following the landscape. It is a complex that includes sport, cultural and recreational facilities. Panathinaikos Stadium is to be developed inside the city center and for that reason, the design study contains the "city dynamic". The stadium should function as a cultural landmark, inside a constantly changing environment. Hence its location is in the center of the site (178.000 sq.m.) and at the cross of the road network axes. The conceptual idea considered equally the morphological and functional integration of the different uses inside one "shell", having as a criterion their design unity but also their distinct differentiation. Sport areas and secondary-use areas engage, interact and form a single multifunctional ensemble. The stadium is characterized by a potential introversion, which is related to the creation of a dynamic sport atmosphere, while the ties to the area that surrounds it are kept intact. The new Stadium of Panathinaikos in Athens is of the "elite" class, according to UEFA regulations, and will be the home of the most historical and successful team of Athens.



CONCERT HALL IN KALAMATA

Title: Competition for the Concert Hall in Kalamata
Client: Competition
Year: 2005
Size: 7.873 sq.m.

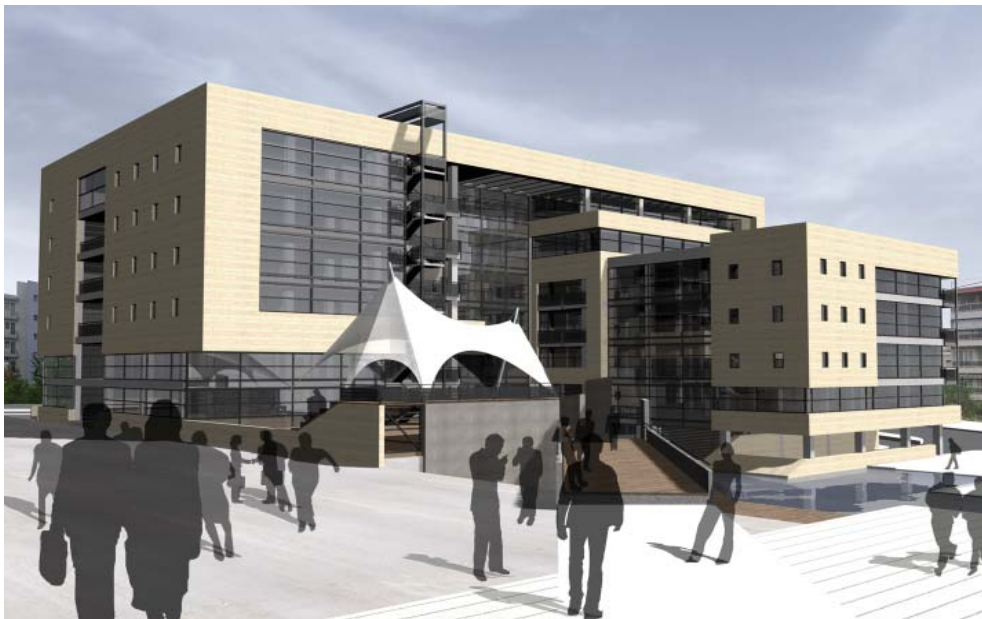


Description:

The Concert hall in Kalamata is a demanding project which requires to solve much more important problems than its own functional problems. It is needed to coexist with the context area and the rest of the urban structure while at the same time it should reflect the qualities and values of the surrounding society.

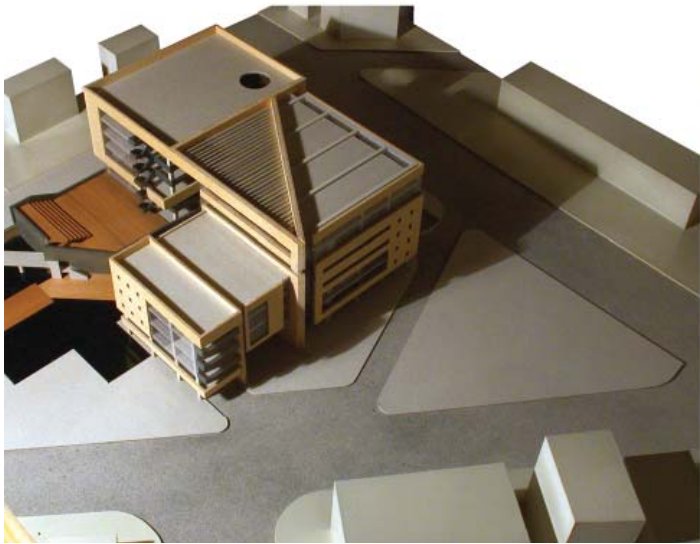
PREFECTURE OF CENTRAL MACEDONIA

Title: Periphery of central Macedonia, Head Offices
Client: Architectural Competition
Year: 2004
Size: 16.000 sq.m.



Description:

The project is located in an old army camp, the plot is enormous covering a building block. The task was to present an eight storey building and four utility buildings. Our proposal was designed carefully spreading the volumes in a way to be easy accessible and to facilitate the needs, of the of the main authority of northern Greece, in the best way. The surrounding area of the buildings was designed with plenty of lakes bridges flower galleries and visitors car park. The main concept was to designed a big triangular frame enclosing three smaller triangular building volumes. The building was design to endure the lower temperatures of northern Greece. The facades are consist of limestone and curtain wall giving a pleasant and robust appearance.



MASTERPLAN

ΣΤΑΘΜΗ +



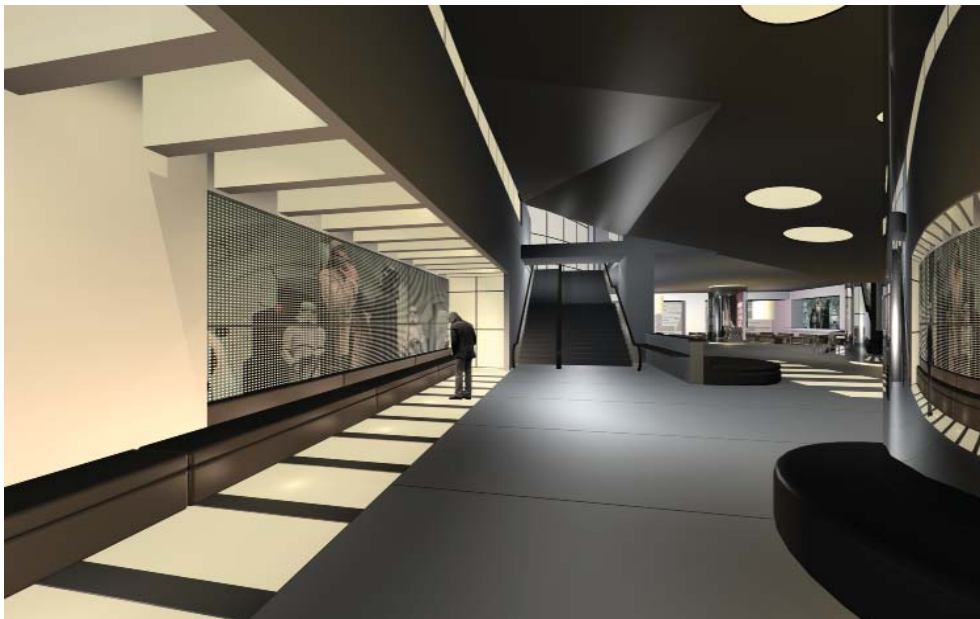
VILLAGE CINEMAS AT THE MALL

Title: Interior Design of specific cinema areas within the Marousi Media Village Shopping and Entertainment complex

Client: Village Roadshow Limited

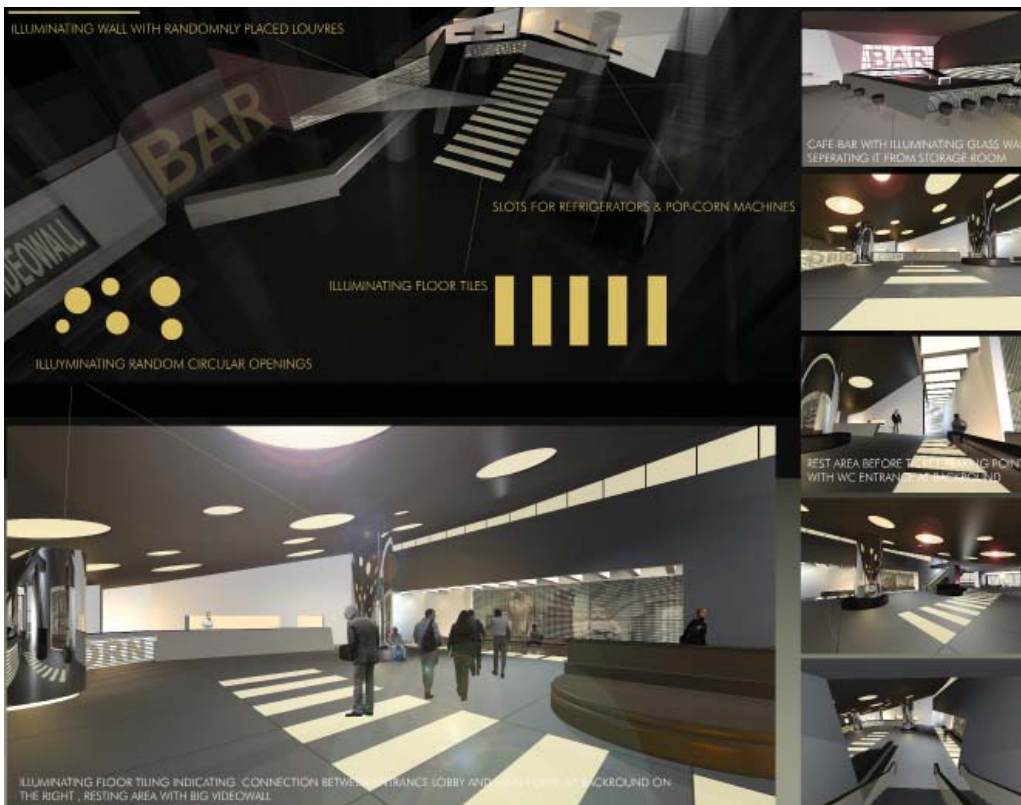
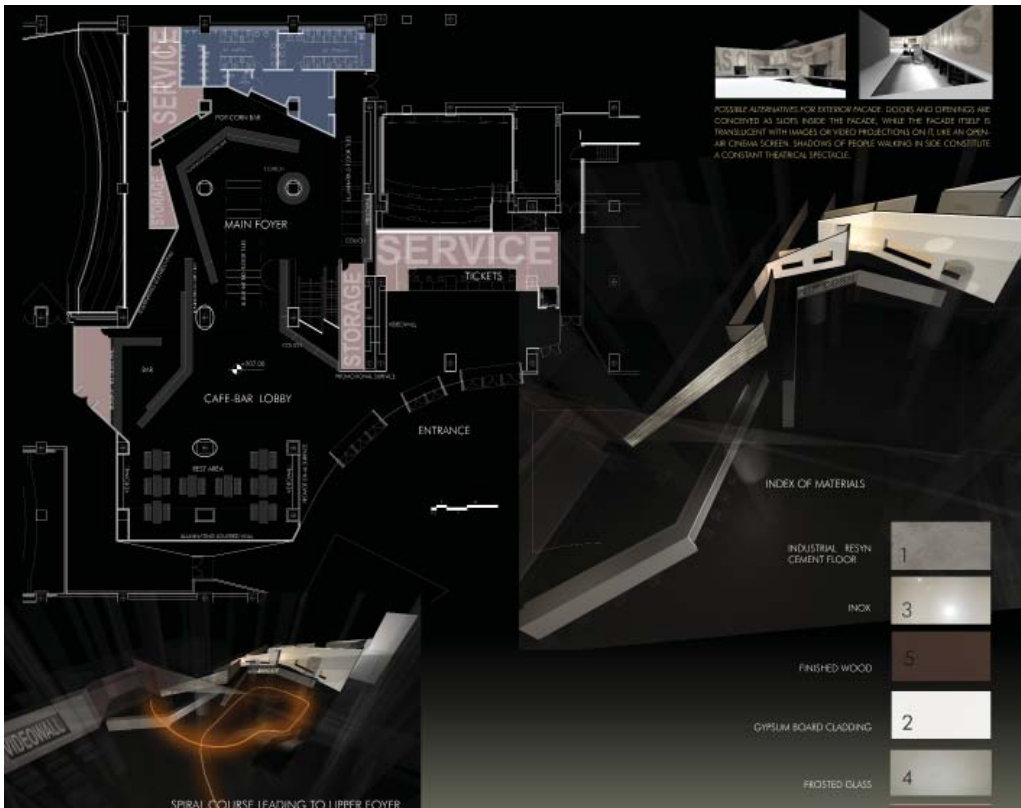
Year: 2004

Size: 9.000 sq.m.



Description:

As we decided to participate in the competition for the interior design of the Village Cinemas at the Mall (Athens) we endeavored to accept the challenge appeared, while we tried to take advantage of the given space to its maximum, hence give the best possible outcome. Therefore the changes were restricted only to where we felt it was absolutely necessary.



7 BUILDINGS FOR THE GREEK FIRE BRIGADE DEPARTMENT

Title: Six Administration Buildings and One Fire brigade Station for the Greek Fire Brigade Authority

Client: Gantzoulas – Kourtidis S.A.

Year: 2009

Size: -

PUBLIC BUILDINGS



Description:

This is the first project that was developed in Greece with the **Public–Private–Partnership model (PPP)**. Our firm, as a part of a larger consortium, undertook the architectural design studies, from a conceptual level to the detailed studies. Due to the fact that the 7 buildings were in 7 different areas all around Greece, each study had to incorporate the local urban & morphological rules and directions.



PEPSI DISTRIBUTION CENTER KOROPHI

Title: Design and Construction of the new Pepsico Ivi distribution center

Client: PepsiCo Ivi

Year: 1991 - 2016

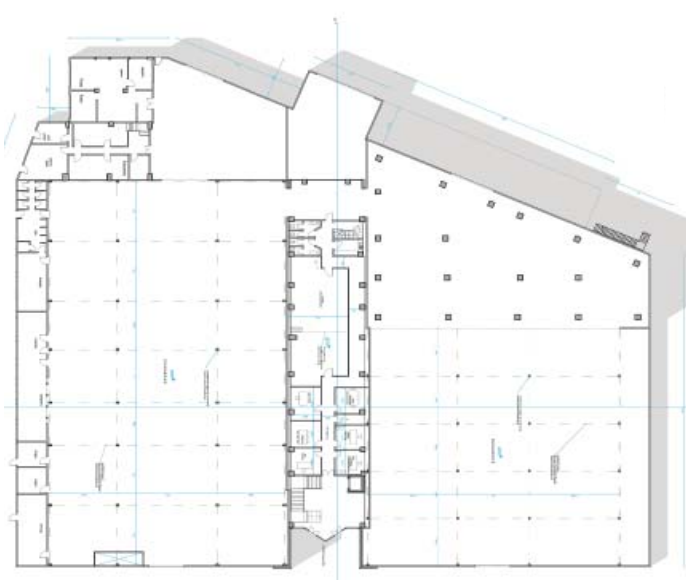
Size: 9.000 sq.m.



FACTORY - DISTRIBUTION

Description:

PepsiCo one of the most famous refreshments brands in the world decided with together with Ivi their local partner now acquired by Pepsi to move their distribution center in the eastern Attica. A.R.I.S. executed the design studies and carried out the on-site supervision, project management and the construction, concerning the new plant of PepsiCo-IVI, on the new location in Koropi, Greece.



DISTRIBUTION CENTER TASTY FOODS S.A.

Title: Warehouse and Distribution Center in Agios Stefanos
Client: Tasty Foods S.A.
Year: 2011
Size: 3.000 sq.m.



Description:

Tasty Foods, part of the PepsiCo group, is the market leader in Greece, in the field of snacks. Tasty assigned A.R.I.S. with the execution of the architectural, structural and electromechanical study regarding the new warehouse and distribution center in Athens. After the successful completion of the design studies and the project tendering, A.R.I.S. undertook also the on-site supervision and the project management. The development of this project was completed successfully at the end of 2011.



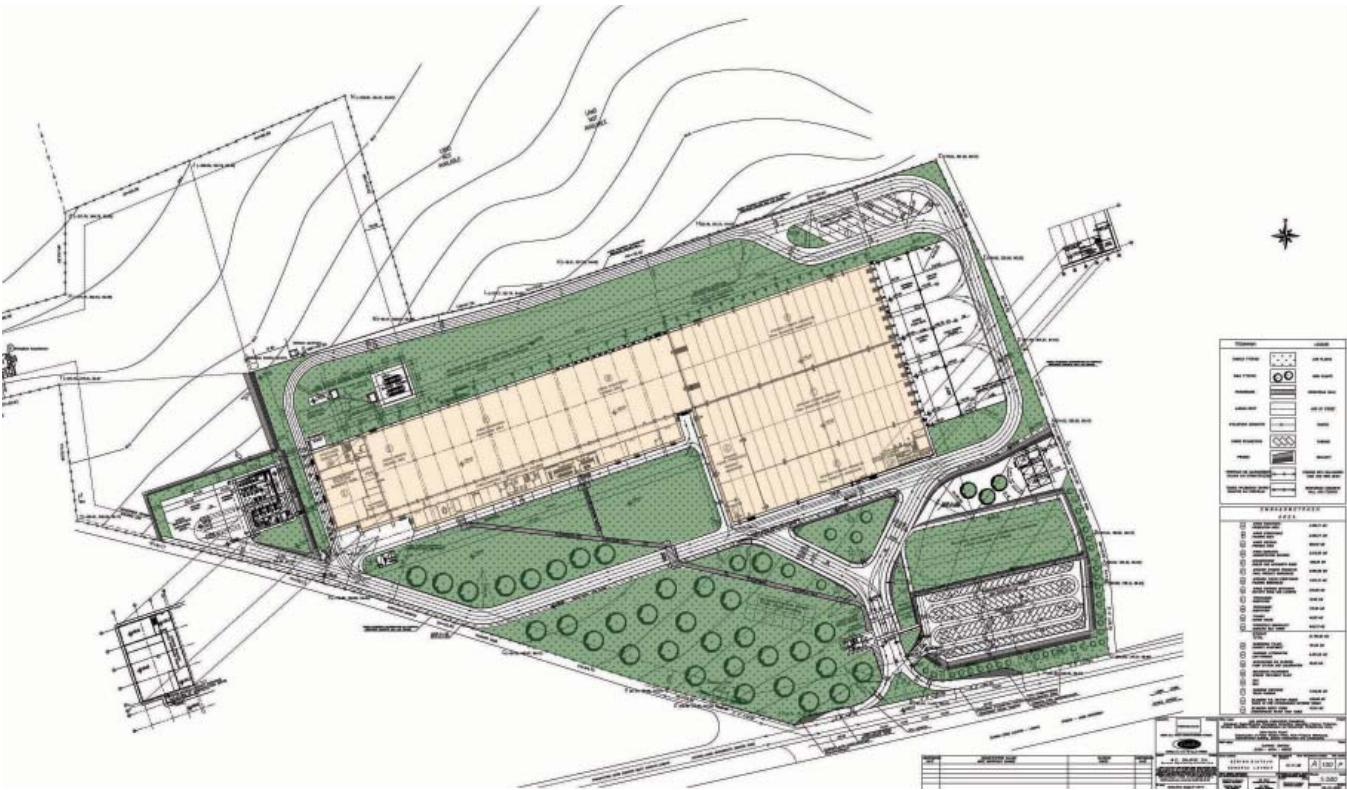
MISKO - BARILLA FACTORY IN THIVA

Title: Factory & Warehouse in Thiva, Greece
Client: Misko S.A. – Barilla Alimentare
Year: 2000
Size: 18.000 sq.m.



Description:

Barilla is an Italian company and one of the most famous pasta & bread brands in the world. In the early nineties Barilla acquired the pasta market leader of Greece, namely Misko. A.R.I.S. executed the design studies and carried out the on-site supervision and project management, concerning the new plant of Misko – Barilla, outside the city of Thiva, Greece.



PEPSICO INOFITA FACTORY

Title: Main beverages factory of PepsiCo at Inofita, Viotia

Client: PepsiCo IVI

Year: 2017

Size: 25.400 sq.m.



Description:

During the 20 years of operation of this factory, ARIS provided PepsiCo with holistic project management services, as well as design studies, which comprised New-Build facilities, expansions, refurbishments and structural & energy upgrading. Our services maintained and guaranteed the correct and obscured operation of the factory. When PepsiCo decided to sell the factory, ARIS was assigned to the tech. consultancy and PM services for the transfer of the plot and facilities to the new owner.



VODAFONE BUSINESS CENTER AND WAREHOUSE

Title: Business Center & Warehouse of Vodafone in Thessalonica

Client: Vodafone - Panafon

Year: 2013

Size: 1.200 sq.m.



FACTORY - DISTRIBUTION

Description:

ARIS provided Vodafone with PM, technical consultancy and planning services for the refurbishment and expansion of their headquarters in Pylaia, Thessalonica (near the city airport).



PEPSICO LOUTRAKI FACTORY

Title: Water bottling factory in Loutraki

Client: PepsiCo IVI

Year: 2007-2017

Size: 13.500 sq.m.



Description:

Over the last decade, ARIS undertook the execution of various design studies (structural, ELM, architectural) for the factory of PepsiCo in Loutraki. In addition to that ARIS provided PepsiCo with PM & tech. Consultancy services regarding the urban planning, and we managed to modify the General Urban Plan of the local municipality and add significant value to the plot. When PepsiCo decided to sell the factory, ARIS was assigned to the tech. Consultancy and PM services for the sale process.



COLGATE PALMOLIVE FACILITIES

Title: Colgate - Palmolive Facilities

Client: Colgate - Palmolive

Year: 1991 - 2002

Size: 12.100 sq.m.



FACTORY - DISTRIBUTION

Description:

ARIS was the main designer and lead architect of Colgate for the expansion and refurbishment of their facilities on Pireos Av. The facilities comprised the factory, the offices and the warehouse of the company. During the construction period of the above-mentioned projects, ARIS provided on site supervision and PM services.

PROCTER & GAMBLE LOGISTICS CENTER

Title: Procter & Gamble Logistics Center

Client: Procter & Gamble

Year: 1986-2006

Size: 55.500 sq.m.



Description:

On behalf of P&G, ARIS executed the necessary design studies for the company's' logistic centre in Aspropyrgos, Attica. Furthermore we undertook the design studies for the modernization of P&G's warehouses and offices. Upon approval of our plans started the construction phase of the project, for which ARIS was the project manager. The project was successfully completed and delivered to the client.



JOHNSON & JOHNSON FACTORY

Title: Johnson & Johnson Factory

Client: Johnson & Johnson

Year: 2000 - 2002

Size: 6.500 sq.m.



FACTORY - DISTRIBUTION

Description:

Johnson and Johnson assigned to ARIS the design studies and the project management services regarding their new factory and supporting facilities at Mandra, Attica. This project was completed within the set time-frame and budget.



INTRODUCTION	WORKS	XL	L	M	STRUCTURE	COLLABORATIONS	CLIENTS	LIST OF WORKS

M

Residential
Stores
Restoration



LUXURY RESIDENCES

Title: Luxury Residential Complex & Maisonettes in Kifisia
Client: Private
Year: 2005
Size: 1.200 sq.m.



Description:

This project was designed and developed by A.R.I.S. It is one of many boutique constructions developed by A.R.I.S., in one of the most prestigious suburbs of Athens. The main design characteristics represent our firms design identity, which is wide recognizable. The completion of this residential complex added one more successful development in our portfolio.



SUMMER HOUSE IN NEA MAKRI

Title: Two-storey house

Client: Private

Year: 2014

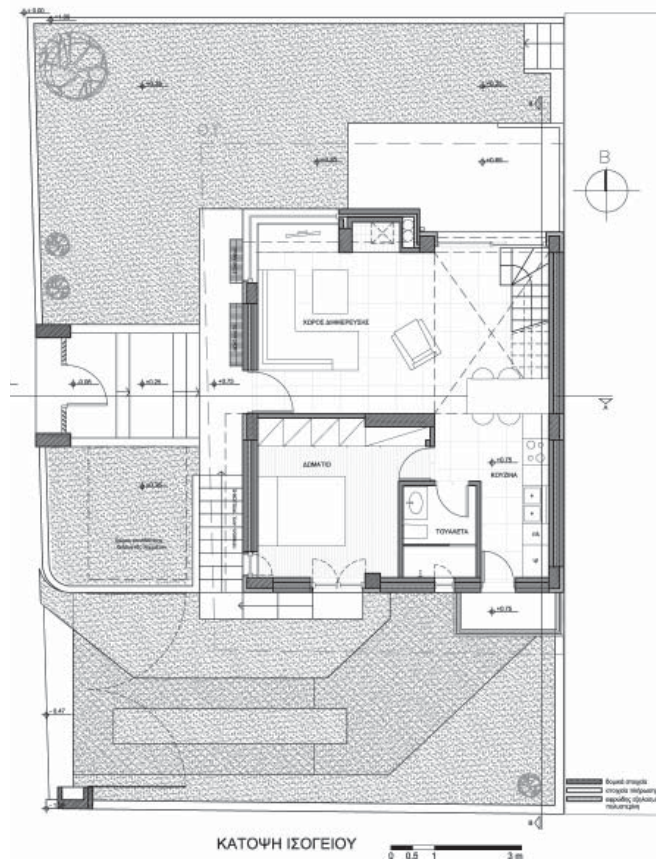
Size: 140 sq.m.



HOUSING

Description:

A two-storey summer house close to the eastern sea side of Attica in the region of Nea Makri. The house gives the inhabitant the impression that the surrounding area of the plot is a living space. Moreover the building uses its excess of volume as an advantage in order to give the impression that the limited interior spaces are bigger than they really are. It is indeed a very fresh and pleasant living space.



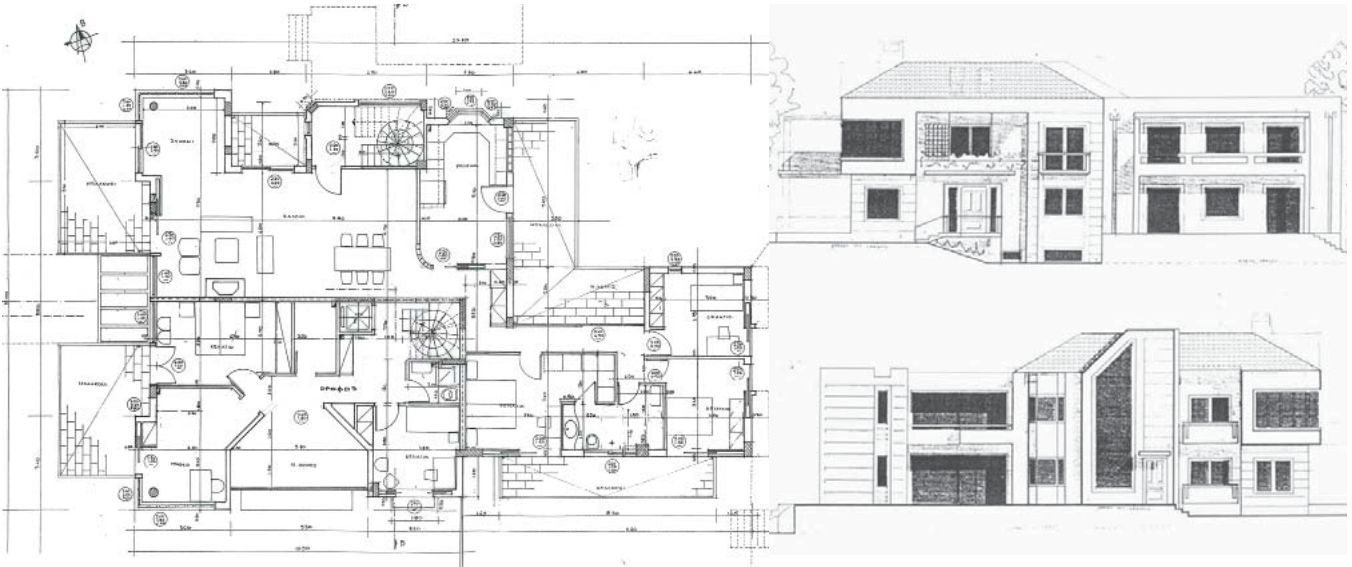
MAISONETTES IN EKALI

Title: Luxury Maisonettes in Ekali (northern Athens)
Client: private
Year: 1999
Size: 850 sq.m.



Description:

This project was designed and developed by A.R.I.S. We executed all of the design studies, incl. the interior design, and also carried out the on-site supervision and project management. We financed the development and completed the construction within a year. This complex comprises 3 different Maisonettes of approximately 300 sq.m. each. The site is located in probably the most prestigious location in the north of Athens.



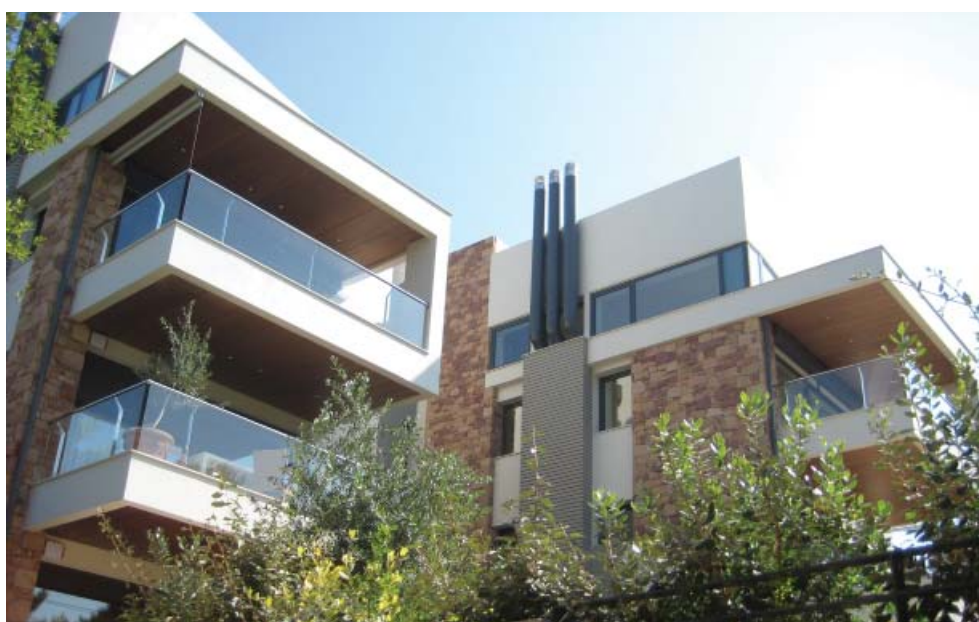
RESIDENCES IN POLITIA

Title: Luxury Residencies & Maisonettes in Politia

Client: Private

Year: 2008

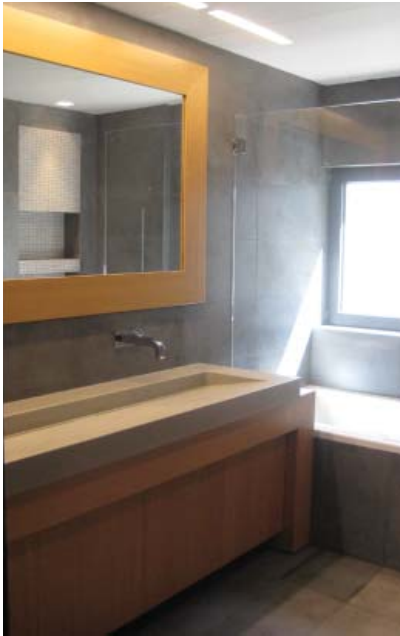
Size: 1.400 sq.m.



HOUSING

Description:

This residential development was executed from A.R.I.S., in the prominent northern suburbs of Athens. Its distinct design characteristics represent our firm's design identity. A.R.I.S. carried out the entire design studies (architectural, structural, electromechanical etc), as well as the project management and financing. This boutique construction is one of many, which were developed entirely by us, and has a unique position in our portfolio.



SUMMER RESIDENCE IN MYKONOS

Title: Summer + Leisure Residence in Mykonos

Client: A. Terzopoulos

Year: 2003

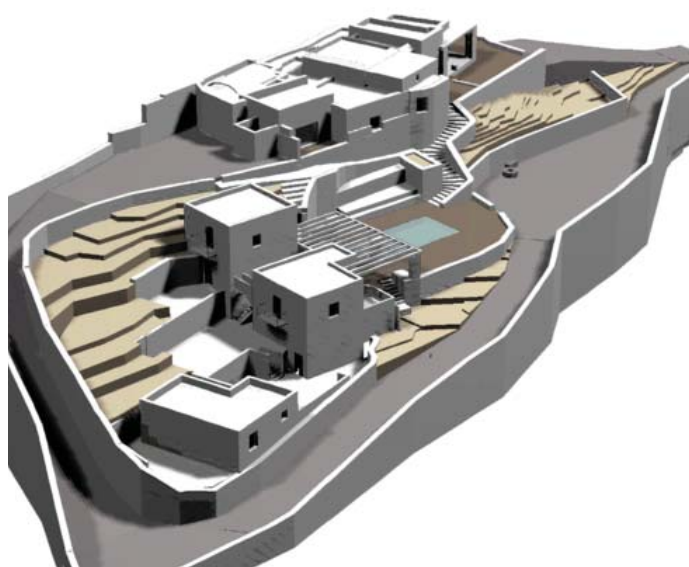
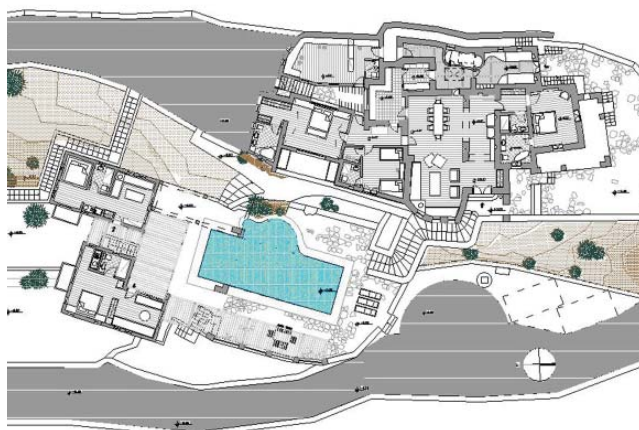
Size: 1800 sq.m.

HOUSING



Description:

The building is located at the top of a hill in Mykonos with excellent sea view. Based on an existing house we designed a summer villa which consists of lines and curves as well as of consecutive volumes frequently used in Cyclades islands. Large scale open spaces are surrounding the swimming pool, the bar, and the BBQ. Some of our synthetic components that can be found in the surrounding traditional design are the atrium, color "white" and the loggia.



HOUSING COMPLEX IN ANDROS

Title: Summer + Leisure Residence in Andros
Client: M. Filis
Year: 2007
Size: 1.890 sq.m.



Description:

In Batsi one of the most famous places in Andros is the location of the new housing complex we designed. The six houses are built in a way that can be used as a condo Hotel or to be sold separately. A very big pool is located at the big common area where the residents can have extended view of the landscape and the sea.



VILLA IN EKALI

Title: Villas in Ekali, Athens

Client: Private

Year: 1998

Size: 780 sq.m.



HOUSING

RESIDENCE IN VOULA

Title: Villa in Panorama Voula, Athens

Client: Private

Year: 2001

Size: 560 sq.m.



VILLA IN SOUNIO

Title: Villas in Sounio

Client: Private

Year: 2005

Size: 410 sq.m.



RESIDENCE IN PARNITHA

Title: Villas in Parnitha

Client: Private

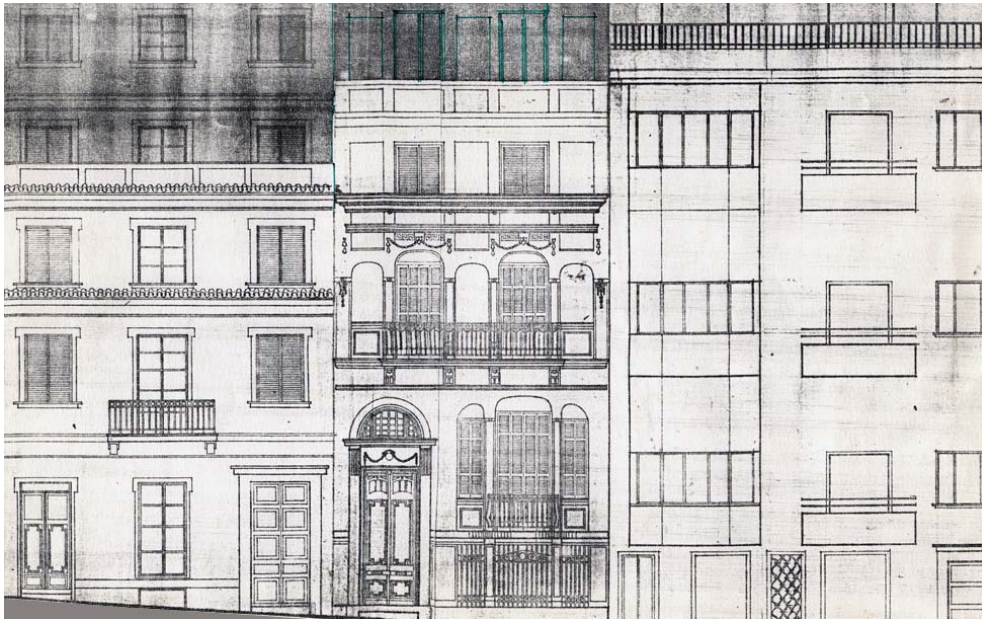
Year: 2008

Size: 580 sq.m.



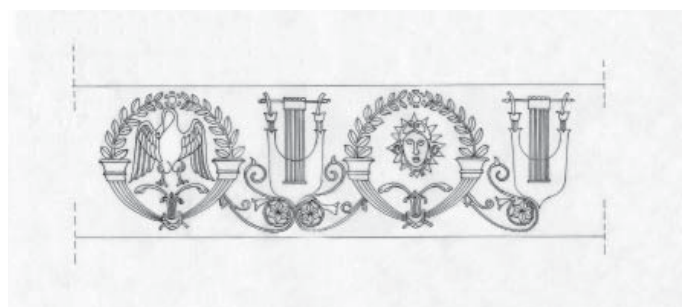
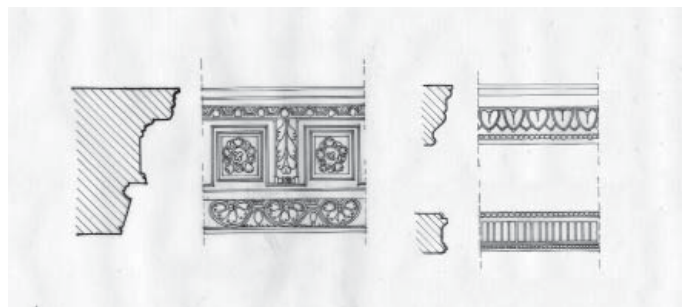
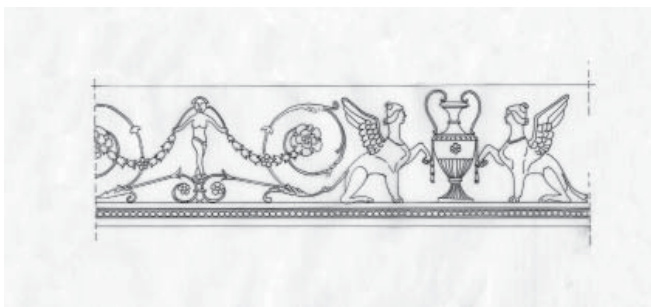
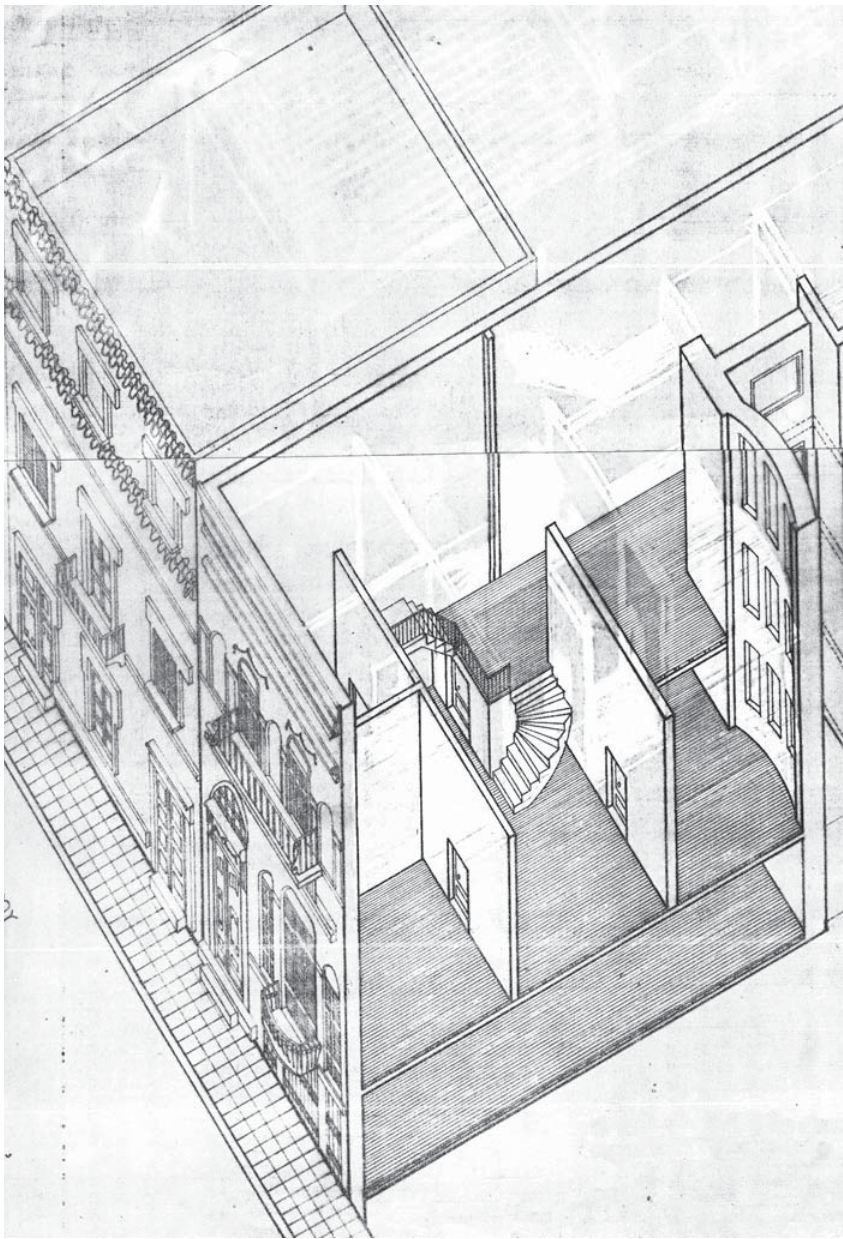
RESTORATION IN ATHENS CITY CENTER

Title: Restoration of a Listed Building in Athens City Center
Client: Union of War Veterans
Year: 1983
Size: 800 sq.m.



Description:

This edifice was the residence of Alexander Prince of Greece. It is a four storey building with two basements, which was designed and built in 1906, with Art Nouveau elements. The project scope comprised the complete internal restoration while preserving the façade. This special architectural design study was the first of its kind in Greece. The refurbishment works respected all of the external morphological characteristics. However the interiors were redesigned and rearranged, so as to cover the needs of its current owner – user, namely the Union of War Veterans.



RESTORATIONS

Size: 560 sq.m.



The project consisted of 3 parts. The first was the strengthening and supporting of the structure. The second was the renovation of the interiors and exterior façade incl. windows, canopies, decorative elements, frames, floors & stairs. The third and final step was the refurbishment of the final overlaps, the wooden structured doors, the external gallery and the roof. The implementation of the study was a step by step interference in a listed monument, while preserving the necessary protection measures. This edifice was constructed in the beginning of the 20th century and thus our final design study respected the traditional design methods.

INTRODUCTION	WORKS	XL	L	M	STRUCTURE	COLLABORATIONS	CLIENTS	LIST OF WORKS

STRUCTURE

Work
People



CLIENT REPRESENTATIVE
PROJECT ARCHITECT
STUDY DIRECTOR
DEPUTY STUDY DIRECTOR



CLIENT



QUALITY CONTROL

**Public Consultation Team
(public projects)**

Consultation Strategy
Consultation Coordination

Implementation Team

Implementation Team
Leader

Implementation Mechanism
Costing
Sustainability Assessment

Specifications Team

Specifications Team
Leader

Design Specs
Construction Material
Specs
Morphological Specs

Architects Team

Architect Team Leader

Urban
Landscaping
Recreational
Cultural Heritage
Buildings / Structures

**Environmental Impact
Assessment Team**

Environmental Team Leader

**Structural Engineering
Team**

Structural Engineering

ELM Engineering Team

ELM Engineering Team
Leader

ARIS HELLAS

PROJECT MANAGEMENT &
CONSULTANCY TEAM STRUCTURE

PROJECT MANAGEMENT DIRECTOR

SPECIAL CONSULTANTS
RISK MANAGEMENT
ON SITE SUPERVISION MANAGER
PROGRESS MANAGER
SPECIFICATION MANAGEMENT
PROJECT EXECUTION - CONSTRUCTION

A.R.I.S. ARCHITECTS

FIELDS OF EXPERTISE

ARCHITECTURAL DESIGN
STRUCTURAL STUDIES
ELECTROMECHANICAL STUDIES
LANDSCAPE DESIGN
URBAN DESIGN
ENVIRONMENTAL STUDIES
PROJECT DEVELOPMENT
INTERIOR DESIGN STUDIES
RECREATION + REGENERATION
RECONSTRUCTION + REFURBISHMENT

ARIS HELLAS

FIELDS OF EXPERTISE

TECHNICAL CONSULTANCY SERVICES
PROJECT MANAGEMENT
CONSTRUCTION MANAGEMENT
ON SITE SUPERVISION
COST ESTIMATION + CONTROLLING
EVALUATION
PROJECT DEFINITION + PREPARATION

BOUTIQUE CONSTRUCTIONS



ARIS GROUP
STRUCTURE

ARIS GROUP

GROUP CEO

M. Mitropoulos, Architect MSc

Member Of:

Technical Chamber of Greece

Greek Design Firms

Greek Architects Society

Union Internationale Des Architectes

Hellenic Environmental Institute

Europa Nostra

LIOR EEIG - Brussels

EUTEC Sri - Bologna

International Project Management
Association

Arab-Greek Chamber of Commerce

ARIS ARCHITECTS

BOARD MEMBERS

M. Mitropoulos, Architect MSc.

C. Mitropoulou, Architect

A. Golfinopoulou, Architect

A. Liriti, Interior Architect

M. Karypidou, Architect

E. Moschonas, Architect MAA

S. Kelaidis

ARIS HELLAS

BOARD MEMBERS

A. Mitropoulos, Civ.Eng.

G. Stravodimos, ELM - Eng.

P. Zantiotis, Civ. Eng.

I. Malamakis, Civ. Eng.

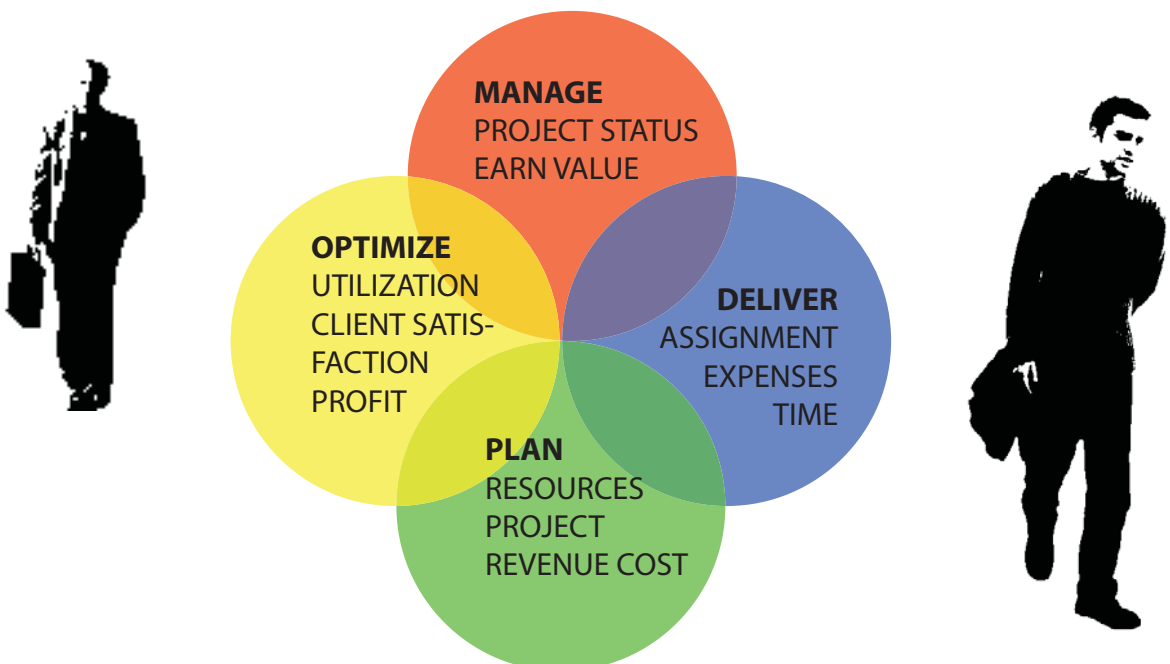
A. Katsigiannis, Civ. Eng.

I. Zolotas, Chem. Eng.

G. Sakellariades, Attorney

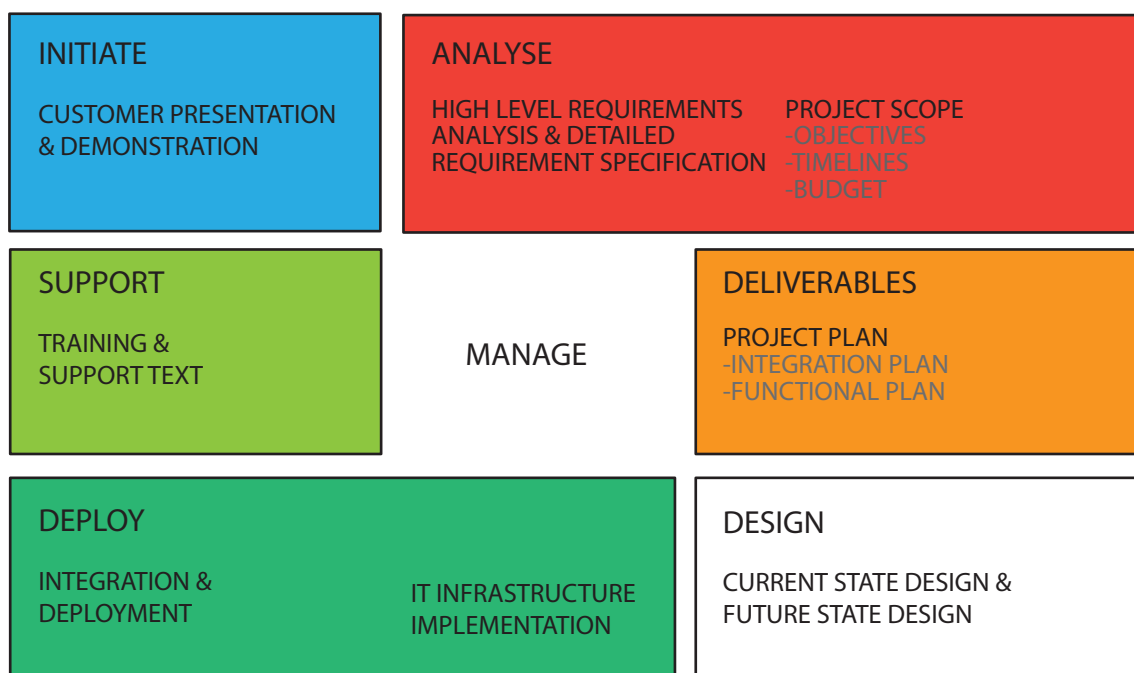
E. Koutsovoulos, ELM - Eng.

PROJECT PHASES



PEOPLE


PROJECT PROSESSES



INTRODUCTION	WORKS	XL	L	M	STRUCTURE	COLLABORATIONS	CLIENTS	LIST OF WORKS

COLLABORATIONS



A photograph of a modern office interior. The scene is viewed through a glass partition, showing a clean, minimalist workspace. In the foreground, a white desk is partially visible, with a black office chair tucked under it. The background features a large window that lets in bright, natural light, creating a high-contrast environment. The ceiling is composed of white acoustic tiles with recessed lighting fixtures. The overall aesthetic is professional and contemporary.

Through the years of our operation we collaborated with several companies around the world for projects all over .

	COMPANY	DISTRICT
1	DREES AND SOMMER	Hamburg – GERMANY
2	ATKINS GROUP	London – ENGLAND
3	GMP ARCHITEKTEN	Hamburg – GERMANY
4	GMW ARCHITECTS	London – ENGLAND
5	PTW ARCHITECTS	Sydney – AUSTRALIA
6	LAW GIBB Group	Reading – U.K.
7	WOODS BAGOT	Sydney – AUSTRALIA
8	CONNELL WAGNER	Queensland – AUSTRALIA
9	FIN MECCANICA Technologies	Torino – ITALY
10	JOIN RESEARCH CENTER	Ispra – ITALY
11	ECA GLOBAL	Barcelona – SPAIN
12	ARBEN MANAGEMENT	N.S.W. - AUSTRALIA
13	BRANDI INGNEURE GmbH	Koln – GERMANY
14	ECOLOGIA Spa	Milan – ITALY
15	USTINAD LABEM	CZECH REPUBLIC
16	MESTO BARDEJOV	Bardejov – SLOVAKIA
17	KULTURALIS – SZAKERTO	Budapest – HUNGARY
18	P.G. GOTEBORG	Goteborg – SWEDEN
19	LANSSSTYRELSEN O.B. LAN	Goteborg – SWEDEN
20	AGENCY E.P.C.C.	Copenhagen – DENMARK
21	HELSINKI CITIHALL	Helsinki – FINLAND
22	MALMO STAD	Fosie – SWEDEN

INTRODUCTION	WORKS	XL	L	M	STRUCTURE	COLLABORATIONS	CLIENTS	LIST OF WORKS

CLIENTS



PUBLIC SECTOR



GREEK POSTAL SERVICES



MUNICIPALITY OF ATHENS



E-GOVERNMENT SOCIAL
SECURITY COMPANY



MINISTRY OF PUBLIC WORKS



MINISTRY OF PUBLIC POLICY & ORDER



PIRAEUS DEVELOPMENT COMPANY



PUBLIC REAL ESTATE COMPANY



MINISTRY OF FINANCE



MINISTRY OF COMMERCE



Δικτυώνουμε το Μέλλον
MINISTRY OF TRANSPORTS



PREFECTURE OF PIRAEUS



RAILWAY PROPERTY MANAGEMENT

PRIVATE SECTOR



Shell & MOH Aviation



JB Energy



PRIVATE SECTOR

SIEMENS



P&G



Johnson & Johnson



PRIVATE SECTOR

DIAGEO



VILLAGE ROADSHOW LIMITED



FOURLIS
ΟΜΙΛΟΣ ΕΤΑΙΡΙΩΝ

McCANN-ERICKSON



PRIVATE SECTOR

SPANOS SA  

M | METKA



NOVAL PROPERTY



INTRODUCTION	WORKS	XL	L	M	STRUCTURE	COLLABORATIONS	CLIENTS	LIST OF WORKS

LIST OF WORKS



NUMBER	YEAR	PROJECT
1	1980	Athletic Center of Kaissariani. N.T.U.A./Municipality of Kaissariani
2	1981	Restoration of Academy Hall – Athens. M.C. Restructuring, organizing of Academy gardens. Academy
3	1982	Youth's athletic center. Municipality of Metamorfosi. M.E.P.L.W.
4	1983	Athletic Center in Agia Eleni. Municipality of Zografou Playground in Zografou. Municipality of Zografou
5	1984	Restoration of the old Mansion in 37 Aeropagitou street, Academy
6	1985	Recreation Square in the Command Center in Kalamata
7	1986	Restoration of the Handicapped Federation Mansion – Pindarou 6
8	1987	Restoration of Castles in Methoni – Koroni. M.C.
9	1988	Restoration of St.Dimitrios church in Limnos island.
10	1989	Expansion - Refurbishment of the Hellas Can-Factory in Corinthos. Hellas Can S.A.
11	1990	Extension – Refurbishment, Repair of Factory Establishment in Athens. Colgate Palmolive S.A.
12	1990	Office Building Refurbishment in the Sygrou Avenue. Procter & Gamble S.A.
13	1990	Office Building Friesland - NOYNOY – in Marousi. Friesland – NOYNOY S.A.
14	1990	Distribution Center for Procter & Gamble in Aspropirgos. Procter & Gamble S.A.
15	1991	Hotel Coral Bay, Samos Island. G.M S.A.
16	1992	Harbor Office study in Edipsos. Harbor office cashier
17	1992	Summer vacation compound in Loutraki. Churchy Constitution
18	1993	Commercial Centre of 34th Constitution. N.I. Syrigos
19	1993	Office building in 332 Sigrou Avenue in 167 Sigrou Avenue in 131 Sigrou Avenue. Mathiopoulos Bros
20	1994	Restoration study of the building in 18 Athinas street. National Insurance Company Mitropoleos & Voulis. National Academy Aiolou 30. National Academy
21	1994	Chemical Engineering School NMU in Zografos. Ministry of Education.
22	1994	Distribution of PepsiCo - IVI Company in Koropi. PepsiCo – IVI S.A. Office Building of PepsiCo - IVI in Kifissias & Sorou. PepsiCo – IVI S.A. Factory of PepsiCo - IVI in Shimatari. PepsiCo – IVI S.A.
23	1995	Refurbishment of Vichy Center in France. ATM S.A. (Brussels)
24	1995	Hospital Center Trois, France. ATM S.A. (Brussels)
25	1995	Redevelopment of parking spaces and recreation areas in national highways. Ministry of Tourism
26	1995	Office Building Procter & Gamble. Procter & Gamble S.A. Reconstruction of Distribution Center in Aspropirgos. Procter & Gamble S.A.
27	1996	Hospital extension, Auriac, France, Lior EEIG
28	1996	World Trade Center Athens, W.T.C. Association
29	1996	Commercial Center Hoeillard Brussels. Lior EEIG
30	1996	Country housing unit in Tervuren, Brussels. ATM S.A.

NUMBER	YEAR	PROJECT
31	1996	General hospital – DIAKENTROS A.T.E.
32	1996	Quarry Rehabilitation – Manda. CHALYPS S.A.
33	1997	Systems of co-production in 3 industries. ELVAL, HALKOR, KAMPEL.
34	1997	Office Building United Distillers Hellas. Diageo S.A.
35	1997	Office Building McCann Erickson. McCann Erickson
36	1998	Urban and Environm. Plan of the Peripheral Highway in Imittos (Katehaki). E. Union (Malmo Stand)
37	1998	Energy Exploitation Plant, Industrial Waste. E. Union DG I, DG XVII, DG XVI
38	1998	Restoration Study of urban zoning. DG XII
39	1999	Urban development designs W.Attica DG XVI. W. Aspropirgos, Palermo, Lipsia and East London borough.
40	1999	Old factory new industrial license. Tasty Foods
41	1999	New factory establishment BARILLA-MISCO in Thiva. Barilla Srl
42	1999	Office Building SmartNet Vouliagmeni. SmartNet
43	1999	Office Bacardi-Martini Hellas. Bacardi L.T.D.
44	2000	Shopping Mall Study of the new International Airport Athens
45	2000	Building Chipita. Chipita A.E.B.E.
46	2000	Olympic Village – ATHENS 2004. ATHENS 2004
47	2000	Media Press Center. ATHENS 2004
48	2000	Monuments Presentation – Protection in 4 European edges. Dublin – Lisbon – Athens – Helsinki E. Union DG X.
49	2001	Restoration and Monument Study of Cultural Heritage. Malmoe, Bergen, Palermo, Ag. Paraskevi E. Union DG X.
50	2001	Children G.Hospital in Attica. Public Real - Estate Corporation
51	2001	Police Head Quarters in Thessalonica. M.P.S.
52	2001	Luxury Hotel in Ekali, Athens. MIRASOL AEETE
53	2002	Hotel AA' Study & Convention Center in Polydrosos, Marousi. IONIA S.A.
54	2002	Post Head-Offices & Stores, including the creation of the new ELTA corporate identity for Southern Greece. ELTA
55	2002	Conference, meeting room, Ceremony area. Ministry of Civil Order.
56	2003	AA' Hotel Study Village Centre. Village Roadshow
57	2002	Office building TSEYP (2o Prize). Public Real-estate Corporation Office building TEAYEK. Public Real-estate Corporation Office Building Law Society
58	2003	Antenna Park (with KPMG and SYMONDS)
59	2003	Re-facilitation of the 13 Ministries. KED (pre selection) (with KPMG and SYMONDS)
60	2003	Technical Support Consultant of the "Ministry of Environment" for the coordination and management of the studies regarding Olympic re-development projects (with the companies: ADO S.A. and DIADIKASIA S.A.) Ministry of Environment. M.E.P.L.W.
61	2003	Office Building in Marousi. Terzopoulos Resort House in Mykonos. Terzopoulos
62	2003	Aquarium. Nea Moudania
63	2003	Factory Intralink. Intralink S.A.
64	2003	Factory Omp in Thiva. C. Balafas A.T.E.

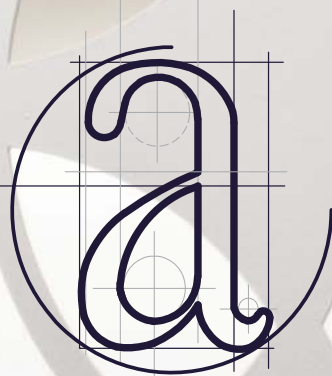
NUMBER	YEAR	PROJECT
65	2003	Siemens AG – HEAD OFFICES - Athens
66	2003	SICS S.A. Siemens A.G. Office Building
67	2003	RUSSIAN FEDERATION Office Building. B. Vovos S.A.
68	2003	POLICE HEAD OFFICES in Ahaia. Elliniki Technodomiki A.T.E.
69	2003	GENERAL PUBLIC HOSPITAL in Irakleio – Crete. Athina A.T.E.
70	2004	METROPOLITAN CENTER in Thessaloniki. Central Macedonia Regional
71	2004	METROPOLITAN PARK of Elliniko. M.E.P.L.W.
72	2004	CONVENTION CENTER at Elliniko Airport (with EDRASI - VIOTER). E.T.A. S.A.
73	2004	VILLAGE CINEMAS Refurbishment (Marousi Media Village Shopping Center). Village Roadshow S.A.
74	2004	UNIVERSITY CLINIC of Thessaloniki. PPP
75	2005	Recreation – Commercial Center, HYPPODROME. PPP
76	2005	JOHNSON & JOHNSON S.A. Factory – plant and offices refurbishment – repair. Johnson & Johnson S.A.
77	2005	OFFICE BUILDING D.I.&P. SIEMENS S.A.
78	2005	SHOPPING CENTER (Piraeus – OSE – GAIOSE). PPP
79	2005	Athletic Center in Ekali. Ch. Venetsanos
80	2005	ATHLETIC CENTER in Ag. I. Renti. Rentis Sport Land
81	2005	ESF WERKSTATT – Military HOSPITAL
82	2005	R.S. Stuttgart (Rail Road Station) – Tendercall
83	2005	CANOE – KAYAK Slalom Redevelopment. Village Roadshow S.A.
84	2005	Hotel and Spa Complex in Kastoria. S & K. Smaropoulos
85	2005	DANCE HALL in Kalamata – Tendercall
86	2005	Recreation of PEDION AREOS – Tendercall
87	2006	BEACH VOLLEY Redevelopment. Village Roadshow S.A.
88	2006	VOTANIKOS Area Master plan (Panathinaikos FC Arena Stadium and shopping Mall) – Tendercall
89	2006	PANATHINAIKOS FC Arena Stadium and Shopping Mall
90	2007	Consultant for the Western Greece, Eastern Macedonia and Thrace districts' confounded technical infrastructure works, sponsored by the Greek Ministry of Finance for the period of 2000 – 2008
91	2007	TASTY FOODS - FACTORY EXTENSION in Agios Stefanos. Tasty Foods A.B.G.E.
92	2008	HOUSING COMPLEX in Andros. Private
93	2008	OFFICE BUILDING in Marousi. Diadikasia S.A.
94	2008	TECHNOLOGICAL UNIVERSITY Institute of Athens
95	2008	OFFICE BUILDING in Marousi, ARIS HELLAS S.A.
96	2008	MEAT MARKET – Athens Central Market Organization
97	2008	7 FIRE STATIONS BUILDINGS WITH PPP / Public Real-estate Corporation (KED)
98	2009	SHANGHAI'S – EXPO 2010 - Greek Pavilion
99	2009	RECREATION OF THE AREA OF DRAPETSONA / PIRAEUS METROPOLITAN PARK
100	2009	Office Building of the Law Firm Hadjiprodromou – Triantafyllou

NUMBER	YEAR	PROJECT
101	2009	SIEMENS S.A – THESSALONIKI – Office Building
102	2009	VODAFONE OFFICES THESSALONICA / PYLAIA – KALOHORI
103	2009	BOWLING CENTRE – PIRAEUS
104	2009	FOURLIS GROUP – HEAD OFFICES BUILDING
105	2010	FOOTBALL STADIUM (22.000 seats) and COMMERCIAL CENTRE of F.C. HERCULES
106	2010	SIEMENS RELOCATION – New Siemens Head Offices, Marousi
107	2010	COMMERCIAL, HOTEL AND ATHLETIC FACILITIES OF THE G.A. HERCULES IN THE AREA CHORTATZIDES IN THESSALONICA
108	2010	HELLINIKON METROPOLITAN PARK & BUSINESS CENTER----VINCI CONCESSIONS
109	2010	INTERAMERICAN HEAD OFFICES RELOCATION
110	2010	CHILDREN PARK AL WAGEN – ABU DHABI (I.C.)
111	2010	HOTEL IN MYTIKAS AITOLOAKARNANIAS (4500 SQM.)
112	2011	KASTELLI AIRPORT – CRETE (L.B.G)
113	2011	SIEMENS ENTERPRISE COMMUNICATIONS S.A. – Office Building
114	2011	RAS AL KHAIMAH INTERNATIONAL AIRPORT
115	2011	BACARDI HELLAS - Head Offices Relocation
116	2011	HOTEL IN SKOPELOS
117	2011	COMMERCIAL PARK – AL KOOH – ABU DHABI
118	2012	RECREATION OF THE HISTORICAL CENTRE OF ATHENS
119	2012	FALIRO BAY: COAST LANDMARK
120	2012	PIRAEUS PORT: MEGA YACHTS MARINA
121	2012	RESIDENTIAL & COMMERCIAL DEVELOPMENT OF APPROX. 700.000 SQM. AT MOLINOVA DOLLINA, SOFIA - BULGARIA
122	2013	SHELL & MOH AVIATION – Design Studies for the New Head Offices
123	2013	RESTORATION OF THE GOLF CLUB IN GLYFADA, ATHENS
124	2013	VELTI HEAD OFFICES RELOCATION
125	2013	TASTY – PEPSICO HEAD OFFICES RELOCATION (CONCEPT DESIGN)
126	2013	BB ENERGY HEAD OFFICES RELOCATION (CONCEPT DESIGN)
127	2014	GLAXO SMITHKLEIN HEAD OFFICES (CONCEPT DESIGN)
128	2014	ATHENS GAS COMPANY S.A. HEAD OFFICES RELOCATION
129	2014	PEPSICO – MODIFICATION of THE GENERAL URBAN PLAN (Γ.Π.Σ.) OF LOUTRAKI
130	2014	PEPSICO – MASTER PLAN FOR THE INDUSTRIAL SITE IN LOUTRAKI
131	2014	PEPSICO – ARCHITECTURAL & STRUCTURAL DESIGN STUDIES FOR THE HEAD OFFICES IN KOROI
132	2014	NEW MALL AT PIRAEUS METRO STATION – MASTER PLAN, ARCHITECTURAL DESIGN STUDY & FEASIBILITY STUDY
133	2014	TELENDOS ISLAND – MASTER PLANNING & DEVELOPMENT PROPOSALS THROUGH THE EXISTING LEGISLATION (ΕΣΧΑΔΑ – ΕΣΧΑΔΑ)
134	2014	PEPSICO – MASTER PLANNING AND ARCHITECTURAL DESIGN STUDY FOR THE BEVERAGES FACTORY AT INOFITA

NUMBER	YEAR	PROJECT
136	2015	Bungalows complex in Livadia, central Greece
137	2015	Vitael S.A. Athens Head Offices
138	2015	DHL Express Hellas, Gateway Head Offices at the Athens International Airport
139	2015	DHL Express Hellas, Warehouse at the Athens International Airport
140	2015	DHL Express Hellas Finger (conveyor) extension
141	2015	SHELL MOH Aviation Head Offices, Athens
142	2015	DHL Express Hellas, Alimos Headquarters
143	2015	DHL Express, Limasol Offices and Service Point / Customers Center in Cyprus
144	2015	Logistic Center at Thriassio, Athens (preliminary)
145	2016	Pantheon Plaza Shopping Mall in Larissa, central Greece
146	2016	Talima Venture Shopping Mall and Commercial Center in Metamorfosi, Athens
147	2016	DHL Global Forwarding Hellas Piraeus Head Quarters
148	2016	Masterplanning and Architectural Design Study for the development of a private island near Vouliagmeni, Athens
149	2016	Technical Consultant of PepsiCo IVI for the entire real estate portfolio / assets of PepsiCo
150	2016	Architectural Design and Refurbishment of a traditional Villa (800sqm.) in Kifisia
151	2017	Execution of design studies for the new Mall at Heraclion, Crete
152	2017	Special Urban Design Study and Masterplanning for the creation of a Shopping Mall, over the Piraeus Suburban Railway Station
153	2017	EYDAP Headquarters at Galatsi, Athens (Athens Water Supply Company Offices)
154	2017	New School and Cultural Center in Parikia, Paros Island
155	2018	REGUS Offices at Kifisias Av. at the Athens City Center
156	2018	Special Urban Design Study and Masterplanning for the regeneration of an old industrial site of VIOHALCO in Athens, and the development of a large scale tourism resort and cultural center
157	2018	New Transfer Baggage Facility at the Athens International Airport
158	2018	Special Urban Design Study and Masterplanning for the regeneration of an old camping - resort of VIOHALCO in Sousaki, Corinth
159	2018	Execution of the design studies for the development of an eco-tourism resort including a hotel complex with bungalows and a congress center, at Monemvasia, Peloponnese
160	2018	Design Studies for the creation of a new Hotel and Resort on the island of Naxos, Cyclades
161	2018	Design Studies and technical consultancy services for the creation of a new Hotel and suites complex, on behalf of Village Roadshow at Marousi, Athens
162	2018	Architectural design studies for the development of a new city hotel at Schoenefeld, Berlin, in collaboration with IGP
163	2019	Special Urban Design Study and Masterplanning for the regeneration of a plot (23.000sqm.) of COSMOTE Estate, on the island of Lesbos

NUMBER	YEAR	PROJECT
164	2019	Special Urban Design Study and Masterplanning for the regeneration of a plot (81.000sqm.) of COSMOTE Estate, at Spata - Athens
165	2019	Special Urban Design Study and Masterplanning for the regeneration of a plot (473.000sqm.) of COSMOTE Estate, at Loutsa - Athens
166	2019	Execution of the Master Plan and the architectural design studies for the creation of 2 four-star hotels and bungalows (872 beds - 21.000sqm.), on behalf of Noval S.A. in the area of Kalamaki, Loutraki
167	2019	Execution of the architectural design studies and provision of on-site supervision services for the reconstruction and refurbishment of Astor Hotel (5 star), near Syntagma square, Athens
168	2019	Execution of design studies and provision of technical consultancy services for the refurbishment of the offices of UNIFY – ATOS (2.500 sqm.), at Neo Iraklio, Athens
169	2019	Execution of design studies and provision of technical consultancy services for the new logistics center and head offices of DHL Express Hellas at the international Airport of Thessaloniki (cargo terminal)
170	2019	Execution of design studies for the high school of Rafina Municipality, at Rafina, Attica
171	2020	Execution of design studies for the development of a new 5 star hotel (162 beds) at the municipality of Epidauros
172	2020	Execution of design studies for the development of a new 5 star boutique hotel (30 beds) at Parikia, on the island of Paros
173	2020	Execution of design studies for the development of a new 4 star hotel (64 beds) at the municipality of Argolida, Peloponnese
174	2020	Execution of design studies for the development of a new warehouse and office building (9.000sqm) at Agios Stefanos, Attica (Oroderm, member of DEMO Group)
175	2020	Execution of design studies for the development of 3 new railway stations of the Suburban Railway Network at Loutraki, Peloponnese (ERGOSE, public railway organization)
176	2020	Execution of design studies for the refurbishment of the Headquarters of Roche Hellas S.A. (6.500 sqm.) at Marousi, Athens
177	2020	Execution of design studies for the refurbishment of the Headquarters of DEMO S.A. (2.500 sqm.) at Kryoneri, Athens
178	2021	Execution of design studies and technical consultancy services for the development of the Head Offices of Planet consulting, at Marousi - Athens
179	2021	Execution of architectural design for a new office complex in Marousi, Athens
180	2021	Execution of special urban planning studies and architectural design studies for the development of a new complex Retail Park at Metamorfosi - Lykovrisi, Athens on behalf of Panita Ltd
181	2021	Execution of architectural design studies for a new 5 star Hotel in Santorini





A·R·I·S
GROUP